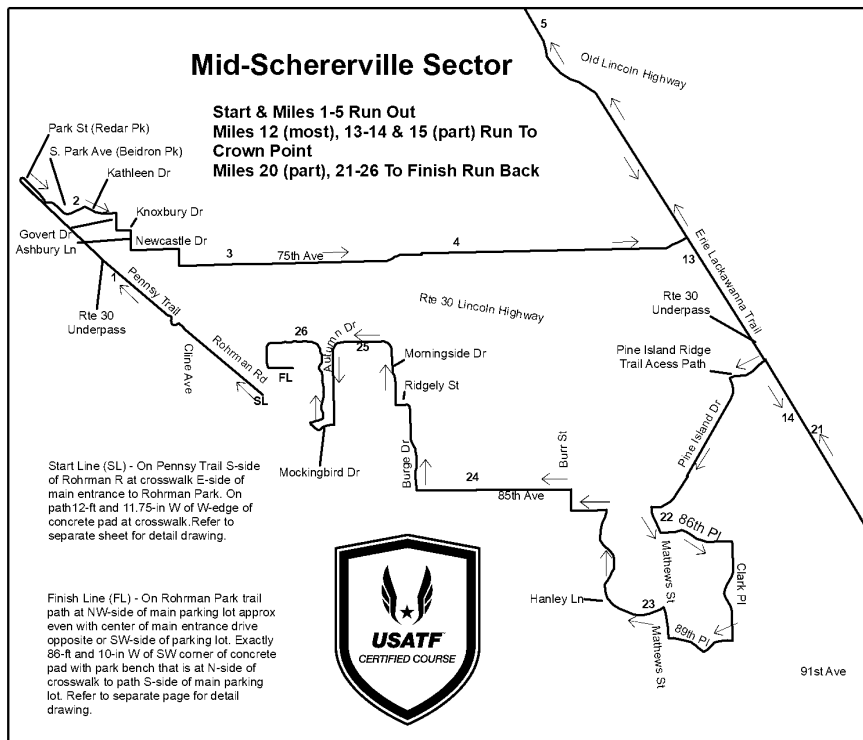
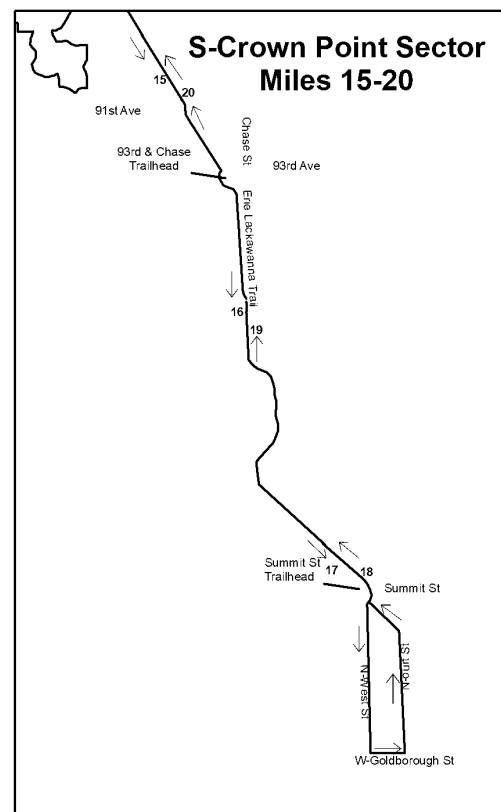
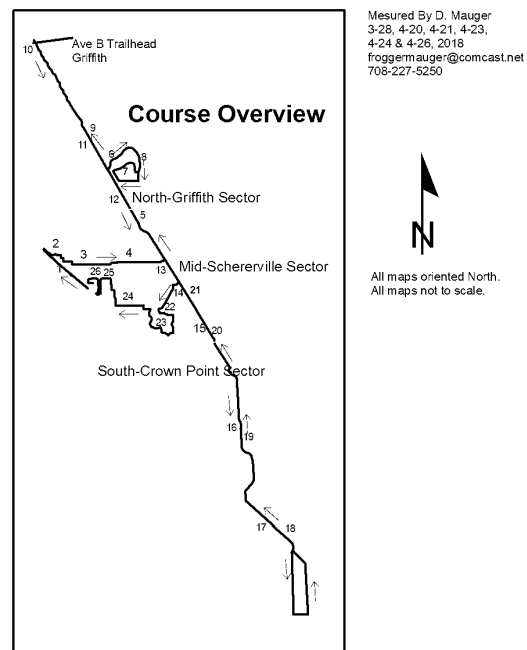
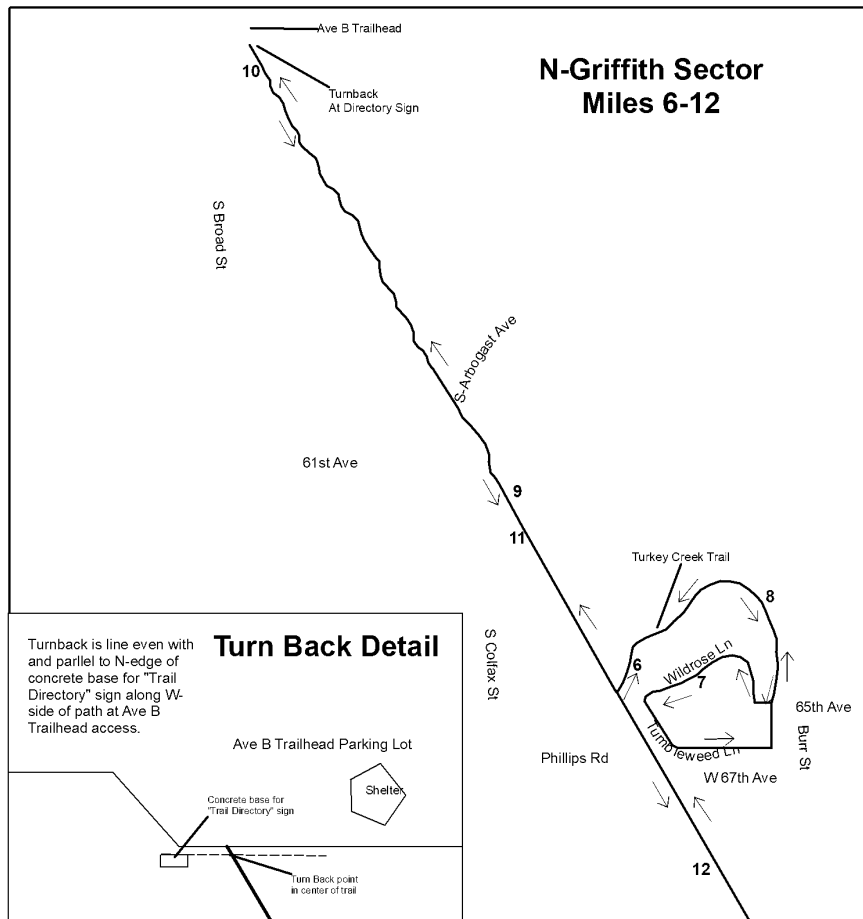
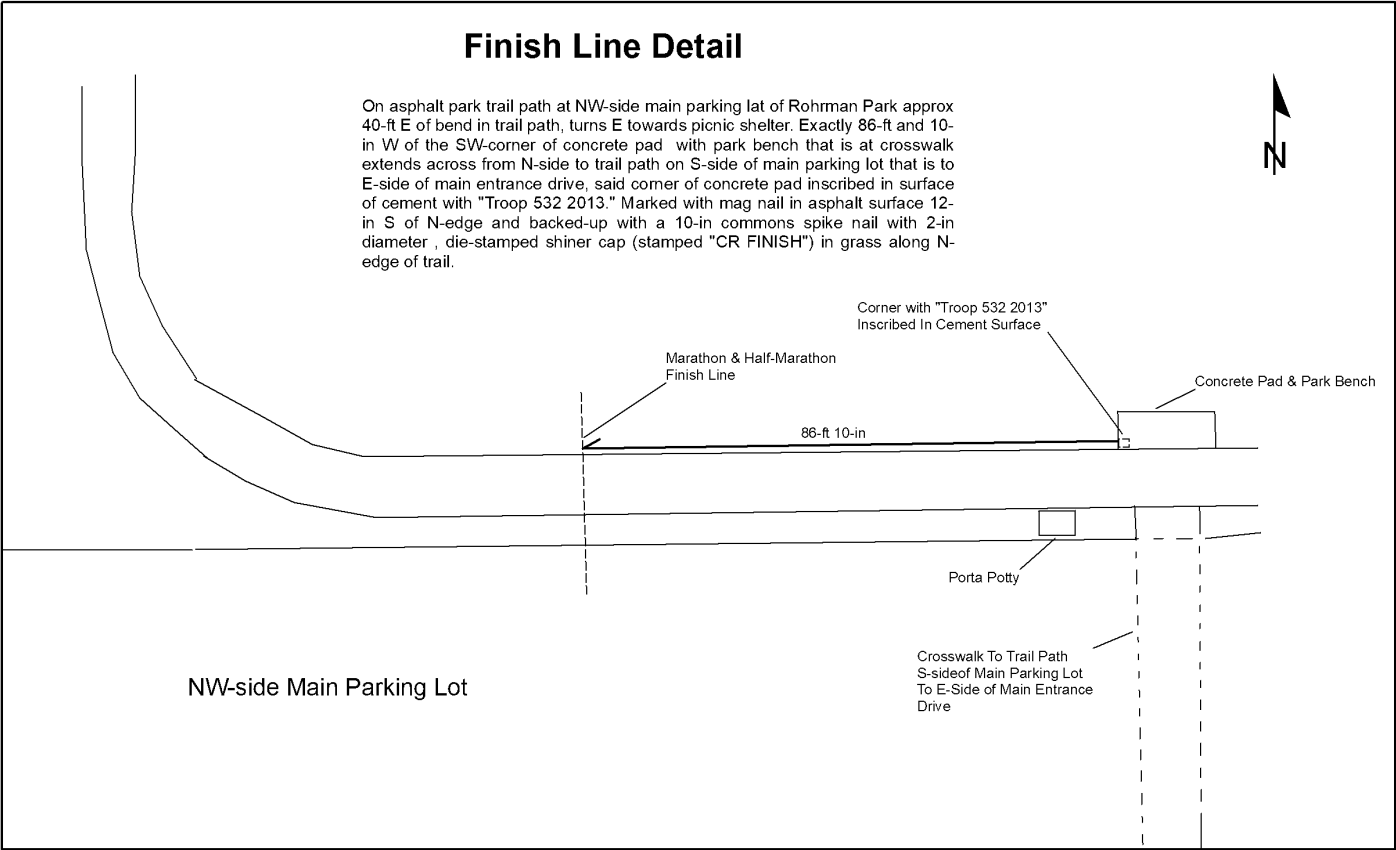
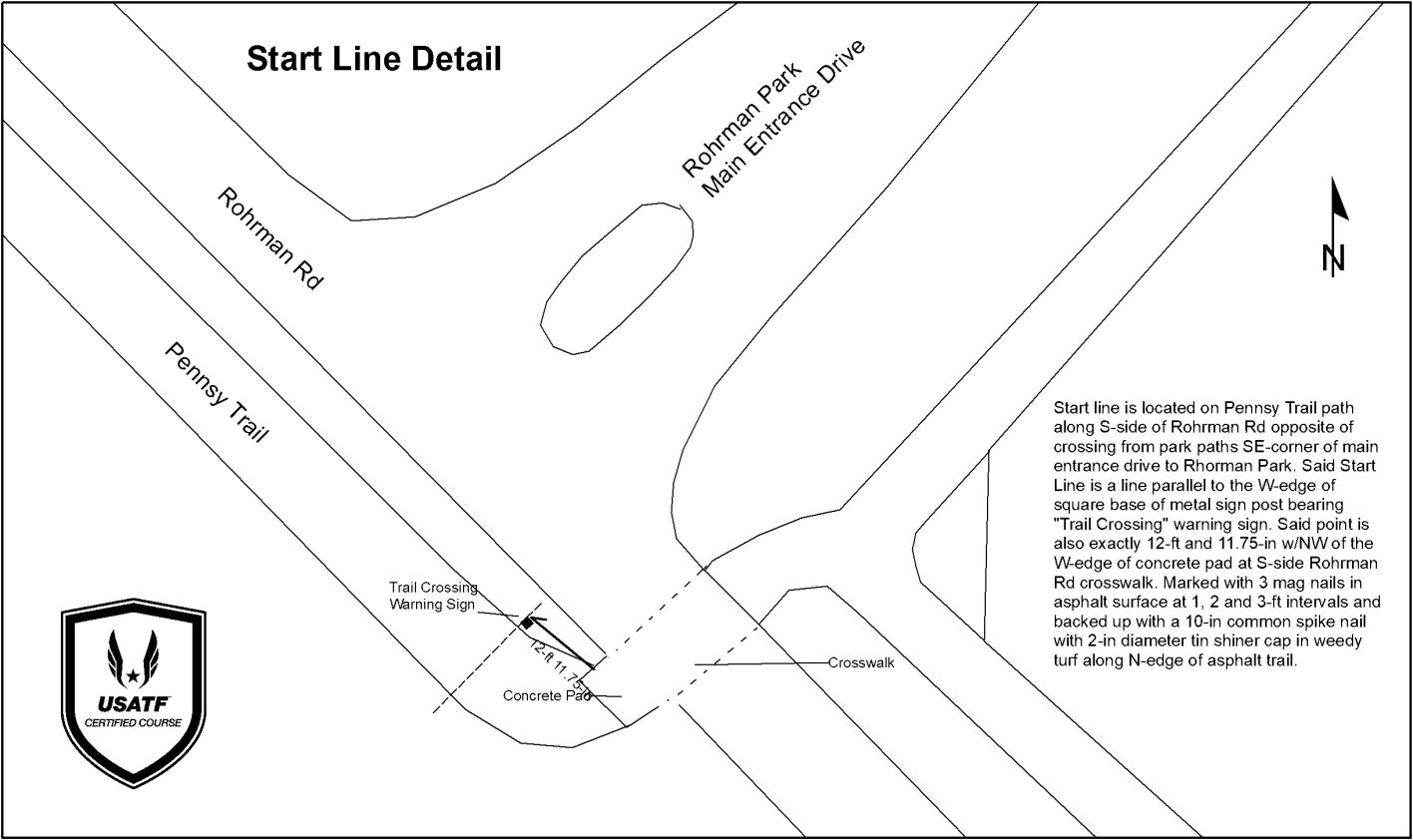


Crossroads Regional Marathon
Griffith, Schererville & Crown Point, Indiana



Crossroads Regional Marathon Start and Finish Line
IN18013TDK



Crossroads Marathon 2018 Start, Finish and Mile Split Locations

IN18013TDK

Start Line – On the Pennsy Trail path at S-side of Rohrman Rd at entrance N-side of road to Rohrman Park. The Start Line is a line parallel to the W-edge of square base of metal sign post bearing Trail Crossing warning sign, and said line perpendicular to N-edge of E/W-oriented asphalt trail path that bears W to join Pennsy Greenway Trail proper just to W-side of Cline Ave. Marked with 3-mag nails at 1.0, 2.0 and 3.0-ft intervals S from the N-edge of trail asphalt at Rohrman Park main entrance road crossing, and backed-up with a 10-in common spike nail with 2-in diameter shiner cap in weedy turf at N-edge of trail surface. Also, exactly 12-ft and 11.75-in W of the W-edge of concrete pad at Rohrman Rd street crossing.

Mile 1 – Along E-side of Pennsy Trail approx 84.5-ft curvilinear along E-edge of Pennsy Greenway Trail path, anchored from N-side of spur path from rear parking lot and trail access at Fleet Feet Schererville store S-side of Route 30 and E of Cline Ave. Said mark is exactly 13-ft and 11-in N of a line tangent to N-edge of 24-in diameter sanitary sewer cover, and perpendicular to the E-edge of Pennsy trail asphalt. Marked with a mag nail in trail asphalt 6-in from E-edge of trail surface, and backed-up with a 10-in common spike nail with a 2-in diameter, die-stamped tin shiner cap (stamped “CR 1 MI”) set in limestone screenings along E-side of trail asphalt.

Mile 2 – Along the N-side of South Park Ave slightly more than 0.1-mi S/SE of intersection of Park St and South Park Ave, and is at tennis court at Biedron Park that is also approximately even with the W-edge of the W-most window of #1928 residence located S-side of said street, noting that this residential structure is a duplex and that the #1928 address is the E-half and #1926 address is the W-half of composite structure. Location is marked with mag nails in street asphalt at 6-in and 42.5-in S from the N-edge of asphalt along curb gutter. Said point is also backed-up with a 10-in common spike nail with 2-in diameter shiner cap in grass along top edge of concrete curb. Said 2-mi point is also 5-ft W/NW of base of steel sign post bearing Pedestrian and No Parking” signs facing E-ward that is located to N-side of South Park Ave.

Mile 3 – Along the N-side of 75th Ave approximately 750-ft E of Cline Ave, and 28-in from E-edge of the 26th guard-rail post along N-side of 75th beginning with 1st post of guardrail to E-side of partial, paved asphalt drive with a locked gate inward that is approximately 161-ft W-ward. Said mark is also 285-ft W of of Nipsco wood utility pole numbered 60 463 that is located along S-side of said road. Point is marked with a mag nail in road asphalt along S-edge of white-painted N-edge of said road, and a mag nail set in narrow and paved asphalt road shoulder and underneath guard rail. Also backed-up with a 10-in common spike nail and 2-in diameter shiner cap in slope along ditch just to N-edge of paved asphalt shoulder.

Mile 4 – Along the N-side of 75th Ave at the NW-corner of intersection with Pershing Ave. Marked with a mag nail in street asphalt that is 4-ft, 10-in S of curvilinear curb at said corner. Said point is exactly 23-ft, 5-in W of W-edge of 2-ft diameter sanitary sewer cover in center of N-side of said intersection.

Mile 5 – Along the W-side of Erie Lackawanna Trail (ELT) approximately 92-ft curvilinear along W-side of trail path N from the N-edge of 73rd Ave. Marked with a mag nail in trail asphalt 35-in E of W-edge of trail asphalt and backed-up with a 10-in common spike nail with 2-in diameter, die-stamped shiner cap (stamped “CR 5 MI”) in grass along W-edge of asphalt path. Exactly 82-ft and 8-in N of N-edge of wood fencepost at W-side of trail at intersection with 73rd Ave, said wood post has plastic marker states “73rd Ave and 12.2 .”

Mile 6 - Along the S-side of Turkey Creek Trail approximately 409.5-ft E of the junction with E-edge of ELT. Approximate GPS location is UTM (NAD83) 0465581E; 4594509N ± 15-ft. Marked with a mag nail in trail asphalt surface 21-in from S-edge of trail and backed up with a 10-in common spike nail with 2-in diameter, die-stamped shiner cap (stamped “CR 6 MI”) in grass along S-edge of trail.

Mile 7 - Along the S-side of Wild Rose Lane in front of #5841 residence S-side of street, approx even with roof support post for overhang roof R-side of front door of house. Exactly 10.5-ft E of the E-side of driveway at juncture with curb of said residence. Marked with a mag nail in street asphalt 12-in N of flat-face edge of curb gutter.

Mile 8 – Along the S-side of Turkey Creek Trail path approx 0.50-mi W of juncture with ELT. Approx even with center of pool of #5724 Wildrose Ln residence opposite and S-side of lake/reservoir. Approx GPS location WP-74, UTM (NAD 83) 0466214E; 4594629N ± 12-ft. Marked with mag nail in trail asphalt 12-in N of S-edge of trail and backed-up with 10-in common spike nail with 2-in diameter, die-stamped shiner cap (stamped “CR 8 MI”) in grass along S-edge of trail. Also on Turkey Creek Trail approx 0.24-mi N-ly of of 65th Ave.

Mile 9 – Along the E-side of ELT approx 0.16-mi S of Arbogast. Approx. GPS location WP-72, UTM (NAD83) 0465146E; 459093N ± 15-ft. Marked with mag nail in trail asphalt 12-in W of E-edge and backed-up with 10-in common spike nail

IN18013TDK

with 2-in diameter, die-stamped shiner cap (stamped "CR 9 MI") in grass along E-edge. Exactly 62-ft and 3.5-in S of SW-corner post of cyclone fence surrounding Crossroads Pipeline Griffith Station.

Full Marathon Turnback – Just short of 10-mi mark at approx 9.97-mi in center of path and even with the N-edge of cement base holding ELT "Directory" sign along W-side of trail entrance at Ave B access, parking and shelter in Griffith..Marked with a mag nail in trail asphalt 12-in E of W-edge of trail.

Mile 10 – Along the W-side of ELT approx even with N-edge of gazebo deck along the N-property line of #301 S. Broad St residence. Approx. GPS location WP-73, UTM (NAD83) 0464421E; 4596416N \pm 15-ft. Exactly 145-ft and 11-in S in a straight line to intersection with W-trail path edge (not curvilinear) from S-edge of cement base for Erie Lackawana Trail "Directory" sign along W-side of trail at Ave B access to path. Also 50-ft and 7-in S of S-edge of sign post of "Stop Ahead" sign on E-side of ELT approaching West Ave B access/parking. Marked with a mag nail in asphalt 12-in E of W-edge and backed-up with a 10-in common spike nail with 2-in diameter, die-stamped shiner cap (stamped "CR 10 MI") in grass along W-edge.

Mile 11 – Along the W-side of ELT approx 0.13-mi N of Trail Creek Rd and approx even with center of E-side of #1167 Sawgrass Dr residence. Approx GPS location WP-71, UTM (NAD83) 0465199E; 4595020N \pm 13-ft. Marked with a mag nail in trail asphalt 12-in E of W-edge of trail surface. Backed-up with a 10-in common spike nail with 2-in diameter, die-stamped shiner cap (stamped "CR 11 MI") in grass along W-edge of trail.

Mile 12 – Along the W-side of ELT approx 0.26-mi S of Phillips Rd and approx even with patio doors to rear side of #6816 Swan Ln residence E-side of trail. Approx GPS loc WP-70, UTM (NAD83) 0465967E; 4593604N \pm 30-ft. Marked with a mag nail in asphalt 12-in E of W-edge of trail and backed-up with a 10-in common spike nail with 2-in diameter, die-stamped shiner cap (stamped "CR 12 MI") in grass along W-edge of trail.

Mile 13 – Along the W-side of ELT approx 0.16-mi S of 75th Ave, just slightly S of S-end of large pond to W-side of trail.; Approx GPS location WP-75, UTM (NAD83) 0466751E; 4592201N \pm 20-ft. Marked with a mag nail in trail asphalt 12-in E of W-edge of trail. Backed-up with 10-in common spike nail with 2-in diameter, die-stamped shiner cap (stamped "CR 13 MI") in grass along W-edge of trail.

Mile 14 – Along the W-side of ELT approx 0.16-mi S of Pine Island Ridge subdivision trail access path. Approx GPS location WP-76, UTM (NAD83) 0467528E; 4595796N \pm 14-ft. Marked with a mag nail 12-in E of W-edge of trail. Backed-up with a 10-in commons spike nail with 2-in diameter die-stamped numbered shiner cap (stamped "CR 14 MI") in grassy turf along W-edge of trail asphalt.

Mile 15 - Along the W-side of ELT apporx 0.18-mi N of 91st Ave. Approx GPS location WP,79 0468312E; 45889393N \pm 14-ft. Exactly 10.5-ft N of Nipsco wood utility power pole #865_065. Marked with a mag nail in trail asphalt 12-in E of W-edge of trail. Backed-up with a 10-in common spike nail with 2-in diameter, die-stamped shiner cap (stamped "CR 15 MI") in grass along W-edge of path.

Mile 16 – Along the W-side ELT approx 0.48-mi S/SW of 93rd Ave and Chase St trail-head access. Approx GPS location WP-80 04687742E; 4587902N \pm 25-ft. Exactly 59-.ft and 5-in S of end post of wood fence along W-side of trail at crossing of small ditch. Marked with a mag nail in asphalt 12-in E of W-edge and backed-up with 10-in common spike nail with 2-in diameter, die-stamped shiner cap (stamped "CR 16 MI") in grass along W-edge of trail..

Mile 17 – Along the W-side ELT N of Summit St Trailhead Access at N-side of cyclone fence around electrical power substation to W-side of trail. Approx GPS location WP-82, 0469204E; 4586546N \pm 16-ft. Exactly 124- ft S of end of end-post of new metal cyclone fence along W-side of trail. Exactly 122-ft S of NE-corner post of cyclone fence around power substation. Marked with mag nail in trail asphalt 12-in E of W-edge of trail. Backed-up with 10-in common spike nail with 2-in diameter numbered shiner cap in grass W-side of trail (stamped "CR 17 MI").

Mile 18 - Along the E-side ELT approx 268.5-ft N of N-side of water tower in center of trail at Crown Point Summit St ELT access, and 46-ft and 7-in N of and even with line of wood electrical power line poles at N-side of mowed right-of-way. Approx GPS location WP-83, 0469317E; 4586430N \pm 16-ft. Exactly 50.0-ft N of center-edge of N-edge of "Roundabout" warning sign post along W-side of trail, and also 52-ft and 3-in at approx 340-degree angle to intersection with E-edge of asphalt from said sign post opposite and on W-ly side of trail. Marked with mag nail in asphalt 12-in W of E-edge of trail and backed-up with 10-in commons spike nail with 2-in diameter, die-stamped shiner cap (stamped "CR 18 MI").

Mile 19 – Along the E-side of ELT approx 0.58-mi S of 93rd Ave and Chase St trailhead access. Approx GPS location WP-81, 0468752; 4587742 \pm 16-ft. Exactly 350-ft and 5-in N of N-end of wood fence post along E-side of trail at bridge crossing creek. Marked with a mag nail in trail asphalt 12-in W of E-edge and backed-up with 10-in common spike nail and 2-in diameter numbered shiner cap (stamped "CR 19 MI").

IN18013TDK

Mile 20 – Along the E-side of ELT approx 0.08-mi N of 91st Ave. Approx GPS location WP-78, 0468393E; 4589248N ± 21-ft. Exactly 65-ft N of Nipsco wood utility power pole #865_062 to W-side of trail. Also exactly 94-ft N of dog-waste station sign post along E-side of trail. Marked with mag nail 12-in W of E-edge of trail. Backed-up with 10-in common spike nail with 2-in diameter, die-stamped numbered shiner cap (stamped “CR 20 MI”).

Mile 21 – Along the E-side of ELT 0.25-mi S of Pine Island Ridge subdivision trail access path. Approx GPS location WP77, 0467612E; 4590658N ± 20-ft. Marked with mag nail in trail asphalt 12-in W of E-edge of trail. Backed-up with a 10-in common spike nail with 2-in diameter, die-stamped numbered shiner cap (stamped “CR 21 MI”).

Mile 21.25 Pine Island Ridge Trail Access Path Anchor Point – Is the N-endpoint for the Pine Island/ELT bike calibration course, the anchor point also extended to E-side of ELT path using T-square and string line. Marked with a 10-in commons spike nail with 2-in diameter, die-stamped shiner cap (stamped “CR 21.25 MI”) in grass to E-edge of path. The precise calculated distance for this point is 21.25035413-mi.

Mile 22 – Along the E-side of Mathew St just S of Durbin Ln in front of #8593 residence. Exactly 21-in S of a line parallel with S-edge of driveway of said residence. Marked with a mag nail in street asphalt 8-in W of edge flat-face of concrete curb gutter.

Mile 23 – Along the N-side of Hanley Ln in center of W-entrance of arched drive of #5290 residence. Also even with center of 2-ft diameter manhole cover in grassy swale opposite side of street. Marked with mag nails 1-ft and 5-ft S of edge of street-driveway seam.

Mile 24 – Along the N-side of 85th Ave approx 196-ft and 4-in E of E-side of Liberty Dr intersection and in front of E-side of #6107 residence. Approx even with SW-corner of small S-ward wing extension of E-side said residence. Exactly 28-ft and 5-in E of E-face of base of post of mailbox of said residence. Marked with mag nail in street asphalt 12-in S of interface of flat-face of concrete curb gutter.

Mile 25 – Along the S-side of Autumn Dr approx 222.5-ft E of Harvest Dr intersection at E-side of driveway of #1441 residence. Exactly 41-in W of angled NE-corner of drive at juncture with curb of said residence. Marked with a mag nail in street asphalt 12-in N of edge of flat-face of curb gutter.

Mile 25.55 Rohrman Park Path Anchor Point - Is at the corner intersection of E-edge of paved park path at juncture with E-W running sidewalk at far SE-side of Rohrman Park. This was a measured point used to calculate final distance required for marathon course and for testing different options to configure final stretch of course through park. Measured point is 25.55158054-mi.

Mile 26 – Along N-side of path at far NE-side of Rohrman Park midway along a grove or stand of five cedar trees located to N-side of path. Approx GPS location WP-85, UTM (NAD83) 0464921E; 4591572N ± 18-ft. Exactly 51-ft and 9-in E of E-edge of 24-in diameter manhole cover at S-side of trail just past or W of stand of cedars. Marked with a mag nail in path asphalt 12-in S of N-edge and backed-up with 10-in commons spike nail with 2-in diameter, die-stamped shiner cap (stamped “CR 26 MI”).

Finish Line – On asphalt trail path in Rohrman Park at NW-side of main parking lot and 40-ft or so E-ward of bend in path from N-S oriented path, turning E towards picnic shelter. Approx GPS location WP84 UTM (NAD83) 0464742E; 4591417N ± 17-ft. Exactly 86-ft and 10-in W of SW corner of concrete pad with park bench that is opposite crosswalk extends across parking lot to path S-side of parking lot, said corner of pad inscribed in cement “Troop 532 2013.” Marked with a mag nail in path asphalt 12-in S of N-edge and backed-up with 10-in common spike nail with 2-in diameter, die-stamped shiner cap (stamped “CR FINISH”).

Crossroads Marathon Course Description

IN18013TDK

The race starts on the Pennsy Trail path along S-side of Rohrman Rd 12-ft and 11.75-in to the W-edge of crosswalk at E-side main entrance drive to Rohrman Park, Schererville, Indiana. The course bears W/NW to Cline Ave, following the crosswalks to S-side of the Cline Ave and Rohrman Rd Roundabout. Course continues NW on the Pennsy Trail encountering the 1-mi mark just past the trail access path from parking lot at NW-side of the Fleet Feet store. Course continues NW on the trail through the underpass tunnel underneath US Rte 30 or Lincoln Highway to S-side of intersection with Austin Ave, where the course bears off of the trail path and onto paved streets, heading S/SE on Park St along Redar Memorial Park, then SE on S-ark Ave, passing the 2-mi mark at E-side near tennis court at Beedron Park, curving NE onto Kathleen Dr.

The course continues E on Kathleen, turning S at Govert Dr, then E at Knoxbury Dr, then S on Ashbury Ln, and then E on Newcastle Dr to intersection with Cline Ave. At Cline course bears S to next turn E onto 75th Ave, passing the 3-mi mark about 0.13-mi E of Cline. Course continues E on 75th passing the 4-mi mark at Pershing Rd intersection, continuing E past Burr St, then turns left or NW onto the ELT at the 4.52-mi mark. On the ELT path the course continues NW back across Burr St, then Old Lincoln Highway a short distance later, encountering the 5-mi mark just past Old Lincoln Highway. The course continues NW on the ELT across Phillips Rd, then turns E onto the Turkey Creek trail path that leads to Harvest Estates subdivision, encountering the 6-mi mark a short distance E-ward. This phase of the course represents the 2nd traverse on paved residential streets with curb and gutter.

The Turkey Creek Trail curves around S leading to a small playground park at the N-side of 65th Ave. From here the course turns W onto 65th, then N a short distance onto Wildrose Ln., which curves around to the W, encountering the 7-mi mark about 220-ft before Coyote Ln. The course then turns S as Tumbleweed Ln, then back E on Prairie Rose Ln, then back N on Falcon Dr back completing the Harvest Estates subdivision loop back onto the Turkey Creek Trail path at playground park N-side of 65th Ave. The course continues back N on the path, passing the 8-mi mark past the curve where trail bears W/NW back to its juncture with the ELT.

Back at the ELT, the course turns right and N/NW passing the 9-mi mark about 0.16-mi SE of Arbogast Ave, continuing NW across Arbogast to the Turn back just short of 10-mi mark (i.e. 9.97-mi) even with N-edge of concrete base of "Trail Directory" sign on W-side of path at junction with Ave B Trailhead. From the Turn back the course bears back S/SE on the ELT, passing the 10-mi mark a short distance later, back across Arbogast and passing the 11-mi mark about 0.22-mi S of Arbogast. The course continues S/SE on the ELT back across Phillips Rd, passing the 12-mi mark midway between Phillips and Old Lincoln Highway, back across both the Old Lincoln Highway and Burr St crossings, passing the 13-mi mark about 0.16-mi S of 75th Ave and continuing SE through the underpass tunnel under US Rte 30 (Lincoln Highway), past the Pine Island Ridge subdivision access path and encountering the 14-mi mark about 0.14-mi S of the Pine Island Ridge trail access path, and the 15-mi mark about 0.25-mi N of 91st Ave.

Across 91st Ave the course heads into the Crown Point Sector continuing SE, then curving E-ly through trail roundabout at the 93rd and Chase St Trailhead, and trail turning due S just past the Trailhead facilities. The course passes the 16-mi mark about 0.50-mi S of 93rd and Chase Trailhead, turning back SE about another 0.05-mi, and past the 17-mi mark about 0.16-mi NW of the "Water Tower Roundabout" at Summit St Trailhead. At Summit St the course now traverses the 3rd section of residential streets, a loop approximately 0.70-mi heading S onto N-West, the turns E onto W-Goldsborough St for one block, then back N onto W-Court St back to the ELT path at Summit St Trailhead.

The course bears NW on the ELT encountering the 18-mi mark about 0.05-mi N of the Water Tower Roundabout, then the 19-mi mark a bit S of the 16-mi mark, then back thru the 93rd and Chase Trailhead Roundabout, then back NW across 91st Ave and back into the Schererville sector of the course, encountering the 20-mi mark about 0.10-mi N of 91st St crossing. The course continues NW passing the 21-mi mark 0.25-mi S of the Pine Island Ridge trail access path, turning W onto the Pine Island Ridge path, 0.19-mi to juncture of path with Pine Island Dr. Thus, at about the 21.44-mi mark, the course enters its 4th phase that runs on paved streets with curb and gutter, winding through the Pine Island Ridge. The course bears S/SW on Pine Island Dr., turning S onto Matthews St, encountering the 22-mi mark just past the Durbin Ln intersection. The course then turns E onto W-86th Pl, then S on Clark Pl, then back W-ly onto W-89th Pl, then N back onto Matthews St a short distance, turning back W at next turn onto Hanley Ln and encountering the 23-mi mark about 0.07-mi distant. Hanley Ln curves around N-ward, then the course turns W onto W-89th Pl, turning N at the next intersection onto Burr St, then W at the next intersection which is W-85th Ave.

The course continues W on 85th Ave passing the 24-mi mark just before Liberty Dr, then a short block W, turning N onto Burge Dr into an undetermined name of subdivision that is to the E-side of Rohrman Park, then turns W onto Ridgely St a short distance, then to next turn N onto Morningside Dr. The course continues N on Morningside, curving W into Autumn Dr, passing the 25-mi mark approx 222.5-ft before Harvest Dr, then curves back S still as Autumn Dr, then turning W onto Mockingbird Dr, and a short distance S-ward, turning onto the sidewalk at W-corner of Mockingbird and Rohrman Rd intersection.

From here the course enters its final phase to 26-mi mark and Finish Line in Rohrman Park, heading W along the sidewalk, then 203-ft W-ward, turning E at the juncture of sidewalk and up the E-branch of Rohrman park path, the measured distance at this anchor point being 25.55-mi. From the 25.55-mi anchor point, the course bears E, then turns N along far E-side of park along backside of homes in adjacent subdivision. The course curves back W on path at far NE-side of park, encountering the 26-mi mark about 250-ft W of the curve, then path turns back S towards the NW-side of the main parking lot, turning back E to the Finish Line on path at NW-side of said parking lot, which is about 87-ft W of the crosswalk at said NW-side of said parking lot.



**Road Running Technical Council
USA Track & Field**

Measurement Certificate

recognized by



Name of the course Crossroads Regional Marathon Distance 42.195 km

Location (state) Indiana (city) Schererville

Type of course: road race ☒ calibration course ☐

Measuring method: bicycle ☒ steel tape ☐ electronic distance meter ☐

Measured by (name, address, phone & e-mail) David Mauger; 17029 Henry Street; Lansing, IL 60438
Ph: 708 227 5250; froggermauger@comcast.net

Race contact (name, address, phone & e-mail) Frank Johnson; 5940 Wildrose Lane; Schererville, IN 46475
Ph: 219 805 6526; fdckjohn@sbcglobal.net

Date(s) when course measured: 3/28, 4/20, 4/21, 4/23, 4/24, 4/26/18

Number of measurements of entire course: 2 Course Configuration: Series of Out and Back Sections

Elevation (meters above sea level) Start 206 Finish 209 Highest 217 Lowest 189

Straight line distance between start & finish 213 m Drop -0.1 m/km Separation 0.5 %

Type of surface: paved 100 % dirt % gravel % grass % track %

Effective date of certification: 5/10/18 Certification code: IN18013TDK

Notice to Race Director: Use this Certification Code in **all** public announcements relating to your race.

Be It Officially Noted That

Based on examination of data provided by the above named measurer, the course described above and in the map attached is hereby certified as reasonably accurate in measurement according to the standards adopted by the Road Running Technical Council. If **any** changes are made to the course, this certification becomes void, and the course must then be recertified.

Verification of Course — In the event a National Open Record is set on this course, or at the discretion of USA Track & Field, a verification remeasurement may be required to be performed by a member of the Road Running Technical Council. If such a remeasurement shows the course to be short, then all pending records will be rejected and the course certification will be cancelled.

This certification expires on December 31 in the year **2028**

AS NATIONALLY CERTIFIED BY:

Date: 5/10/2018

Thomas D. Konieczny – USATF/RRTC Certifier

110 Willow Bend Drive LaPorte, IN 46350 Phone: 219 326 1967 konieczny@csinet.net