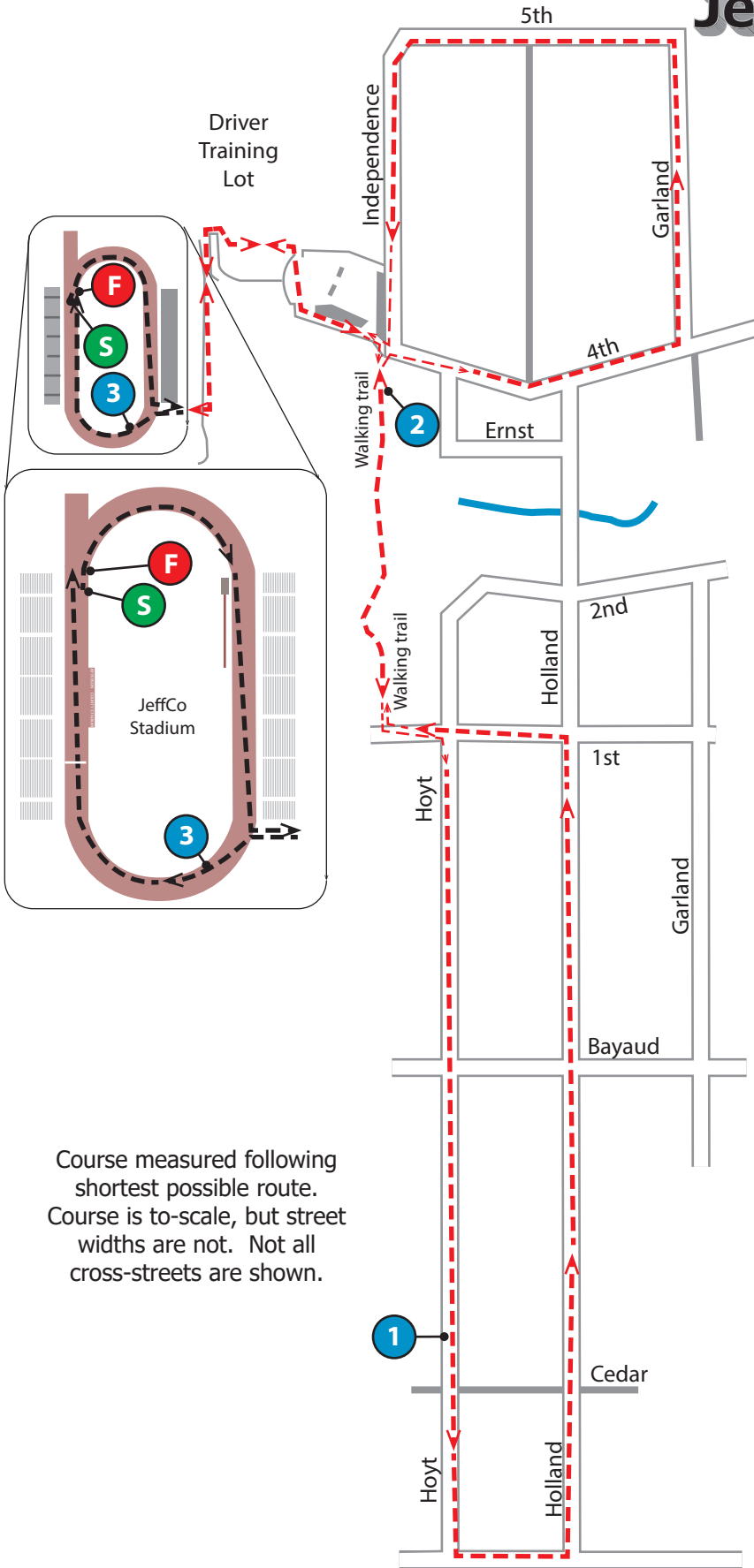
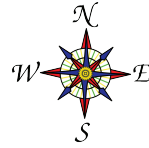


Jeffco Stadium 5k #2

Kipling, S of 6th Ave
Lakewood, CO
USATF Certificate CO19007DCR
Effective 6/1/19 - 12/31/2029



Start:	12' S of N rail of concrete bleachers
1 mile:	8' N of S edge of driveway at 175 S Hoyt
2 mile:	18' S of S end of bldg on E side of trail
3 mile:	9' E of Lane 1 small yellow exchange mark, at E end of scoreboard sign
Finish:	S edge of large yellow triangles, 6' N of N light pole at N end of bleachers

GPS coordinates are given ONLY to get close to described locations. NOT to be used to replace lost marks. Use descriptions to replace lost marks. NAD83

Start: N39.72217° W105.10842°
1 mile: N39.71357° W105.10434°
2 mile: N39.72134° W105.10510°
3 mile: N39.72100° W105.10789°
Finish: N39.72226° W105.10843°

RaceMeasure has measured this course following USATF guidelines, and stands by the measurement.

However, *RaceMeasure* does not set out the course on race-day, and is not responsible for course not set out precisely according to this map.



¹ Start elevation: 5,537' Finish: 5,537' High point: ²5,559' Low point: 5,506'
Measurement, map, and elevation profile by RaceMeasure, May, 2019. www.RaceMeasure.com