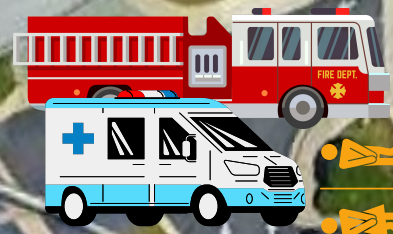




**START**

**REGISTRATION  
& PACKET PICK-UP**



19. 20

- 10. 1.
- 11. 2.
- 12. 3.
- 13. 4.
- 14. 5.
- 15. 6.
- 16. 7.
- 17. 8.
- 18. 9.

**WAVE 3**

**WAVE 2**

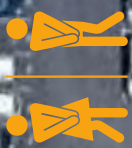
**WAVE 4**

**WAVE 8**

**WAVE 5**

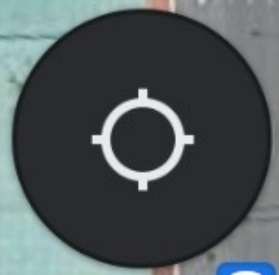
**WAVE 6**

**WAVE 7**



**VENDOR &  
VOLUNTEER  
PARKING**

S Hamilton St



Four Hands

## VENDOR ASSIGNMENTS

1.FLEET FEET  
2.HPAC  
3.NOVANT HEALTH  
4. NOVANT HEALTH  
5. SWARM  
6.HP PEDIATRIC  
DENTISTRY  
7.CONE FOOT & ANKLE

8. A SIMPLE GESTURE  
9. THE ARC OF HIGH POINT  
10. HP YWCA  
11. UNCG KINESIOLOGY  
DEPT  
12.HPU MEDICAL TENT  
13.DAVIS & GOLDBERG  
14.THE JOINT CHIRO

15 GROWING THE  
DISTANCE  
16.DIVINE DROPS  
17.FAITH ACTION  
18.STRETCH ZONE  
19. THE GRINDER CAFE  
20.TASTEE TREATS

## TEAM WAVE ASSIGNMENTS

### WAVE 2

HPCA COUGARS  
KERNODLE MIDDLE  
LEDFORD MIDDLE  
NEW GARDEN FRIENDS  
SCHOOL  
OAK GROVE MIDDLE  
RICH ACRES ELEMENTARY  
SWANN MIDDLE

### WAVE 3

JOHNSON STREET GLOBAL  
NORTHWOOD  
ELEMENTARY  
OAK HILL OWLS  
STOKESDALE ELEMENTARY  
WASHINGTON  
MONTESSORI

### WAVE 4

ALDERMAN ELEMENTARY  
JEFFERSON ELEMENTARY  
KIRKMAN PARK  
ELEMENTARY  
NATHANAEL GREENE  
ELEMENTARY  
TRIANGLE LAKE  
MONTESSORI

### WAVE 5

BROOKS GLOBAL STUDIES  
MILLIS ROAD ELEMENTARY  
MOREHEAD ELEMENTARY  
NEW MARKET ELEMENTARY  
SOUTHWEST ELEMENTARY  
EXPERIENTIAL SCHOOL OF  
GBORO  
WESLEYAN CHRISTIAN  
ACADEMY

### WAVE 6

ALLEN JAY  
ELEMENTARY  
ARCHER RUNNERS  
D-UP  
PINEY GROVE PANDAS  
RANKIN RAMS  
NC LEADERSHIP  
ACADEMY

### WAVE 7

CIS FRANKLINVILLE  
CIS- HOPEWELL  
CIS- JOHN LAWRENCE  
CIS- TRINITY  
IRVING PARK  
ELEMENTARY  
OAK VIEW ELEMENTARY

### WAVE 8

FAIR GROVE TIGERS  
FALKENER ELEMENTARY  
FRIENDSHIP  
ELEMENTARY  
JOYNER ELEMENTARY  
NEXT GENERATION  
ACADEMY  
SHADYBROOK  
ELEMENTARY  
THE SALVATION ARMY  
BOYS & GIRLS CLUB

NOTE: All Community Runners (not attached  
to a GO FAR team) will start in WAVE 1 :)