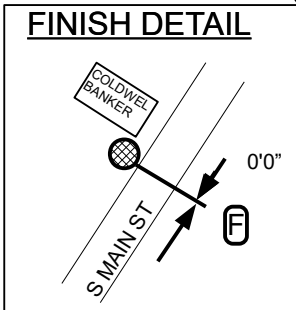
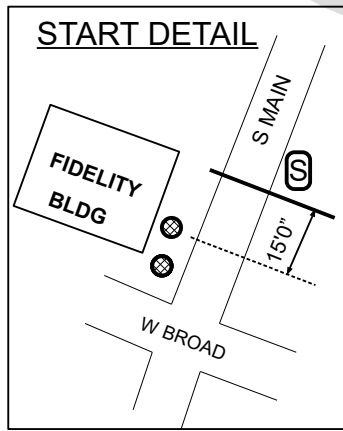
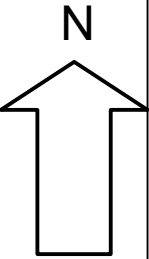
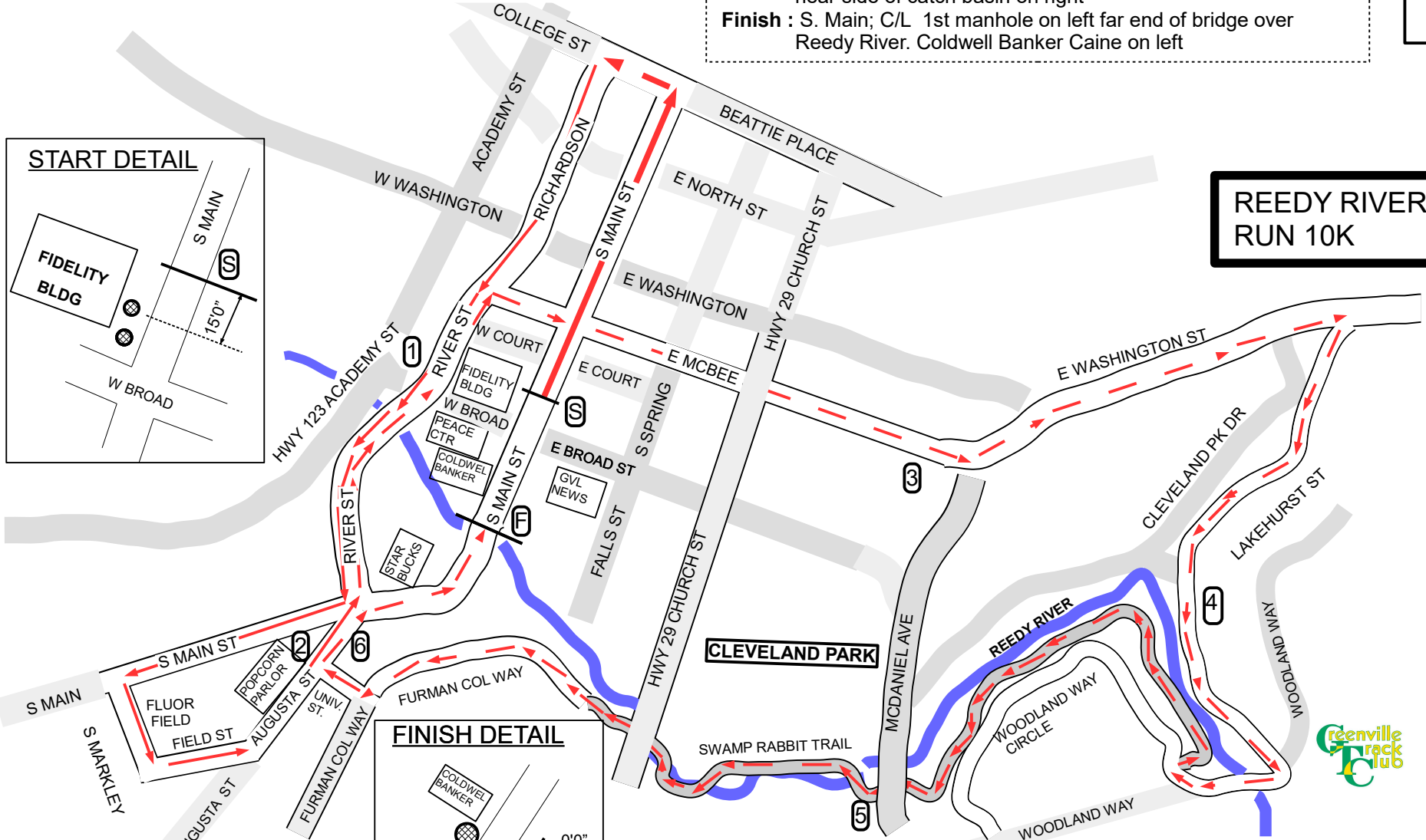


- Start :** 15'0" after C/L of 2nd manhole in sidewalk north of S. Main and Broad St. intersection
- 1 mile:** C/L of manhole on right just before intersection of River and Broad St. Embassy Suites on left.
- 2 mile:** Augusta St. before S Main & Broad. 3'3" before manhole on left
- 3 mile:** Springfield Baptist Church on right. ~90 ft. before McDaniel Ave.

- 4 mile:** 15 after light pole on right side. Parallel parking area on left. Electrical box on right, ~150 ft after intersection of Lakehurst Dr and Cleveland Park Dr.
- 5 mile:** Swamp Rabbit Trail (SWR) just after McDaniel Ave, which is overhead
- 6 mile:** S. Main after intersection with August/River. 15 ft. before the near side of catch basin on right
- Finish :** S. Main; C/L 1st manhole on left far end of bridge over Reedy River. Coldwell Banker Caine on left



**REEDY RIVER  
RUN 10K**



MEASURED BY JIM ROBERTS  
22 MAR 2018  
864-238-6850  
robe8147@earthlink.net

\* no reuse without permission  
of measurer