

HISTORIC FORT GIBSON RUN
Fort Gibson, Oklahoma

MAP NOT TO SCALE

ELEVATIONS:

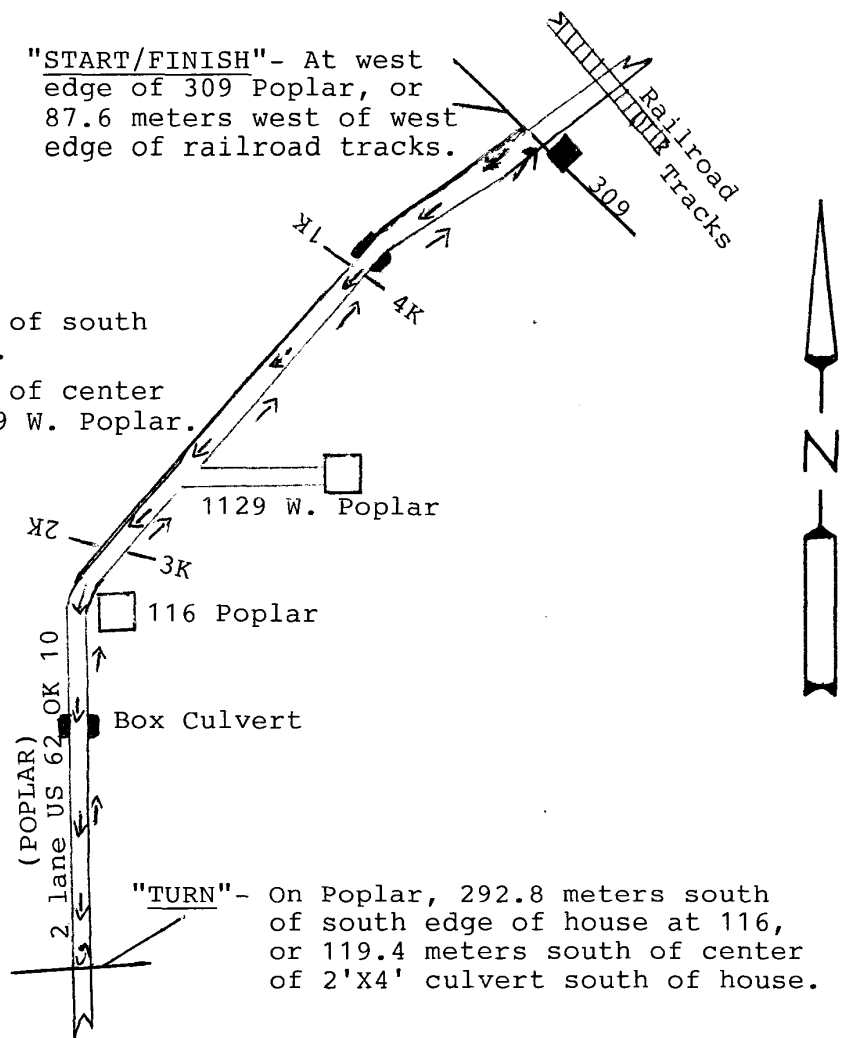
Start - 168 meters
Finish - 168 meters
High - 168 meters
Low - 156 meters

"START/FINISH"- At west edge of 309 Poplar, or 87.6 meters west of west edge of railroad tracks.

SPLITS:

1/4 km- 2 meters south of south edge of bridge.
2/3 km- 63 meters west of center of road to 1299 W. Poplar.

Historic Ft. Gibson Run
USATF Certificate OK12022DG
Effective 2/18/12 - 12/31/2022



COURSE DESCRIPTION:(Out & Back course). Start at west edge of 309 & go west & then south to the TURN located 292.8 meters south of south edge of 116. Turn & follow same course back to the start/finish.

NO RESTRICTIONS!!

#898 02 12 Coneil & Robert