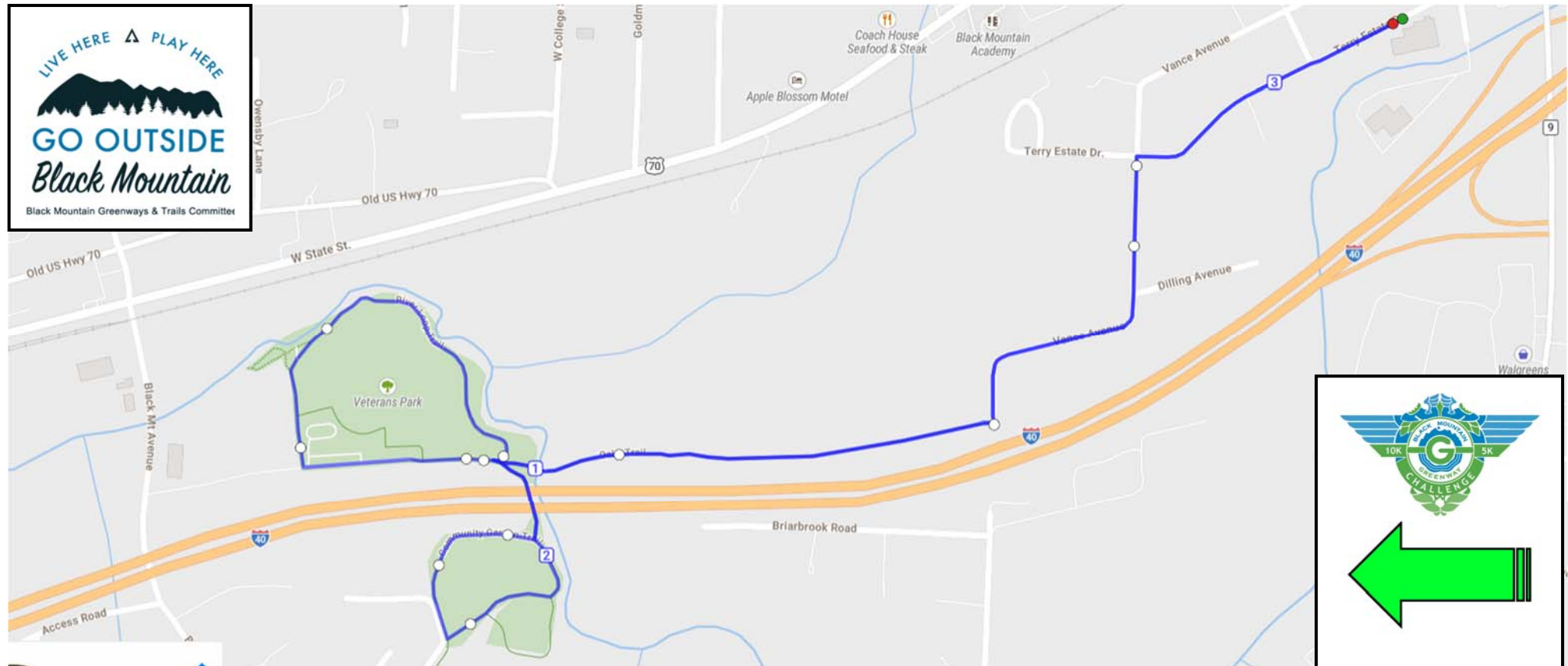


2022 Black Mountain Greenway Challenge 5K 10K Course Map



The course is a double headed lollipop out and back route. The course is simply marked. Follow the green arrows (above).

Start/Finish: Parking Lot adjacent to Black Mountain Rec & Park Department offices 304 Black Mountain Ave – Black Mountain, NC 28711. “5K START”, “10K START”, “10K Turn Around”, and “FINISH” signs are posted on “Public Parking” sign.

Turn-By-Turn Directions:

From Start >> Run (straight/west/away from downtown) on **Terry Estate Dr** (0.28 miles) >> **Turn LEFT** onto **Vance Ave** – remain on Vance for 0.3 miles (the road bares Right – then Left) >> Enter the **Oaks Trail Greenway** >> follow path until after/over river bridge >> **Turn RIGHT** on **River Loop Trail** (gravel path around ball fields) >> **Turn LEFT** on **Veterans Park Dr** – run through the yellow barriers at end of parking area >> **Turn RIGHT** at large rust colored “An Exquisite Moment” sculpture and go through tunnel >> **Turn RIGHT** on to **Community Gardens Greenway** >> follow path – returning to the same spot >> **Turn RIGHT** back through the tunnel >> **Turn RIGHT** back onto **Oaks Trail Greenway** >> **Return to the FINISH** following the same route in reverse.

10K Runners – turn around at Start/Finish line and repeat course.