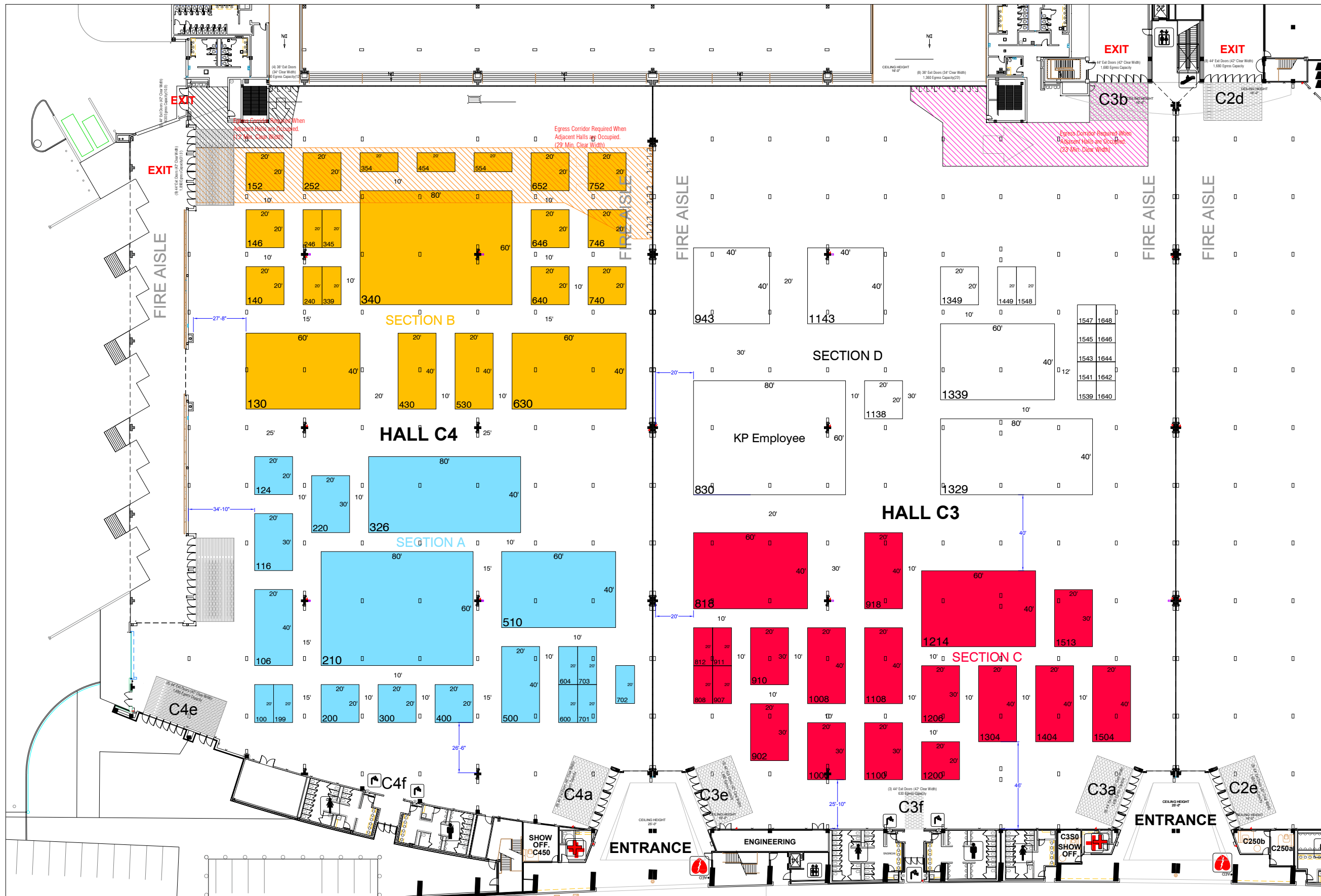


Kaiser Permanente Run Walk & Roll

SEPTEMBER 11, 2019

GEORGIA WORLD CONGRESS CENTER - HALLS C3-C4 - ATLANTA, GEORGIA



REVISION
Date: 9/5/2019
By: MARTHA DE MATIZ - SE

BOOTH COUNT

Inventory as of 09/05/2019

Dimension	Size	Qty	SqFt
10x10'	100	10	1,000
10x20'	200	19	3,800
20x20'	400	17	6,800
20x30'	600	8	4,800
20x40'	800	10	8,000
40x40'	1,600	2	3,200
40x60'	2,400	6	14,400
40x80'	3,200	2	6,400
4,800	3	14,400	
Totals:	77	62,800	

SECTION A as of 09/03/2019

Dimension	Size	Qty	SqFt
10x20'	200	7	1,400
20x20'	400	4	1,600
20x30'	600	2	1,200
20x40'	800	2	1,600
40x60'	2,400	1	2,400
40x80'	3,200	1	3,200
4,800	1	4,800	
Totals:	18	16,200	

SECTION B as of 09/03/2019

Dimension	Size	Qty	SqFt
10x20'	200	7	1,400
20x20'	400	10	4,000
20x30'	600	6	3,600
20x40'	800	6	4,800
40x60'	2,400	2	4,800
4,800	1	4,800	
Totals:	22	16,800	

SECTION C as of 09/03/2019

Dimension	Size	Qty	SqFt
10x20'	200	4	800
20x20'	400	1	400
20x30'	600	6	3,600
20x40'	800	6	4,800
40x60'	2,400	2	4,800
Totals:	19	14,400	

SECTION D as of 09/05/2019

Dimension	Size	Qty	SqFt
10x10'	100	10	1,000
10x20'	200	2	400
20x20'	400	2	800
40x60'	1,600	2	3,200
40x80'	2,400	1	2,400
40x80'	3,200	1	3,200
4,800	1	4,800	
Totals:	19	14,400	

BLDG. LEGEND:

DRAWING INFO

Passport Line Item Number:
#5738542
Facility:
GEORGIA WORLD CONGRESS CENTER
Hall / Level:
HALLS C3-C4
City & State:
ATLANTA, GEORGIA
Scale: CUSTOM
Job #: 492781
AE: RICKY HART
Prod. AE: ---
Started: 9/3/2019
Started By: MARTHA DE MATIZ - SE
Prod. Branch: ATLANTA

FREEMAN

Disclaimer - Every effort has been made to ensure the accuracy of all information contained on this floor plan. However, no warranties, either expressed or implied, are made with respect to this floor plan. If the location of building columns, utilities or other architectural components of the facility is a consideration in the construction or usage of an exhibit, it is the sole responsibility of the exhibitor to physically inspect the facility to verify all dimension and locations.
© Copyright 2007, Freeman Co. All rights reserved.

Confidential and Proprietary - the information contained herein is the proprietary information of Freeman and by accessing the information, the recipient agrees to keep the information confidential and not disclose it to any third party without the prior consent of Freeman. Recipient also agrees to only use the information for its internal evaluation purposes and for no other purpose, without the prior consent of Freeman.

Space ID#	Company	Space ID#	Company	Space ID#	Company
130	Aaron's	1108	Federal Home Loan Bank	530	Randstad
604	Accenture	430	Geiger	1644	Ricoh
740	ACCG	630	Goodwill	300	RLI Transportation
1547	AECOM	1304	Heath & Lineback	1539	Robert Half
400	Alliant Health Solutions	152	Henry County	124	Rockdale County
1545	Alston & Bird	600	Hire Dynamics	510	Solvay Specialty Polymers
652	American Megatrends	1513	Incomm	1504	Southern Company/Georgia Power
1640	Aon	943	Jason's Deli	1206	Starr Companies
220	Assurant Solutions	830	Kaiser Permanente	1214	State of Georgia
116	AT&T	200	Kliklok-Woodman	902	Sto Corp
1449	Atlanta Housing Authority	702	KP Medical	326	Team Fulton
1008	Atlanta Postal Credit Union	1138	L3 Technologies	106	Team GP
240	Banyan Street	1543	LMI	100	Team YKK
907	Broniec Associates	701	Macy's	1143	Ultimate Software
146	Buck	500	MARTA	210	University System of Georgia
703	Calero Software	1642	MAXIMUS	918	Waffle House
1646	CDC Foundation	252	Mbrace	640	WebMD
910	Chick-fil-A Wellness	199	McGriff, Seibels & Williams	339	Wood
340	Children's Healthcare of Atlanta	1548	McKesson	812	Woodruff Arts Center
1329	City of Atlanta	1000	Meag Power	140	Zelis
752	City of South Fulton	1349	Meggitt		
1648	Concessions International	1404	Miller Zell		
246	Crum & Forster	818	National Vision		
1100	Dekalb County Employee Wellness	911	Newcomb & Boyd		
1200	Delta Air Lines	646	Niles Bolton		
1339	Delta Community Credit Union	354	Norfolk Southern		
345	Earthlink	1541	Procurri		
746	EMO Trans	808	PWC		
454	Emory	554	Qgenda		