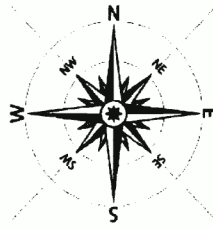
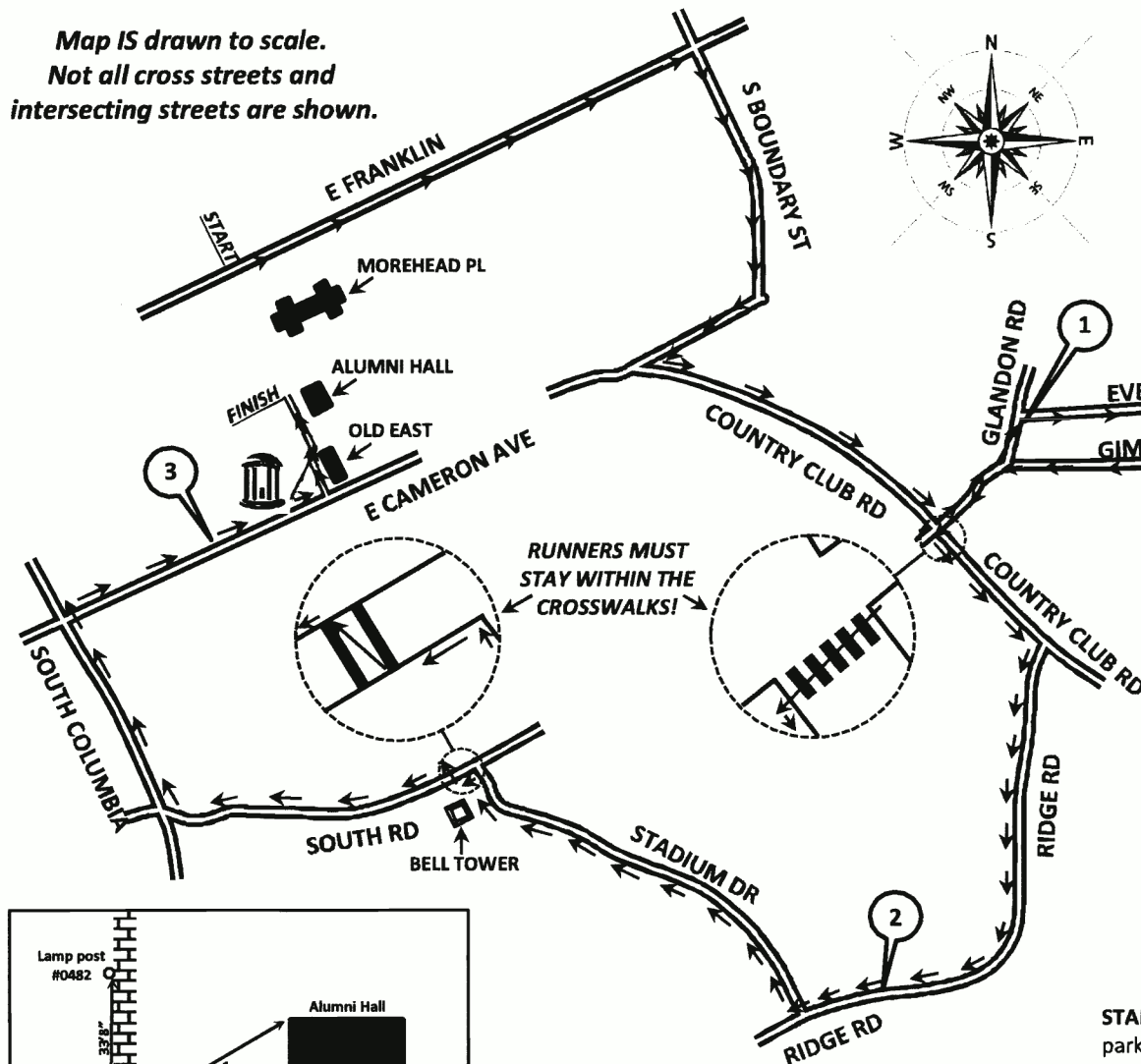


Map IS drawn to scale.  
Not all cross streets and  
intersecting streets are shown.



# 5K

FOR  
EDUCATION

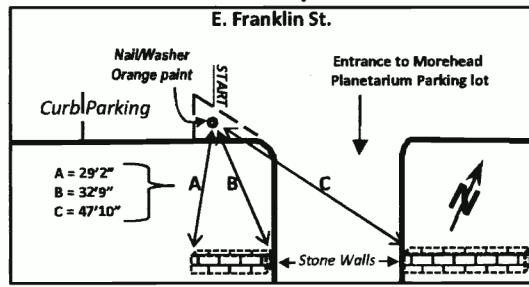
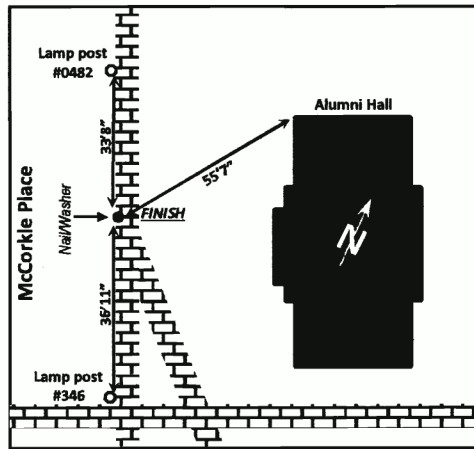
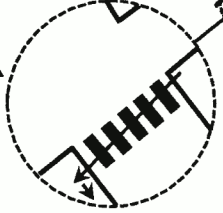
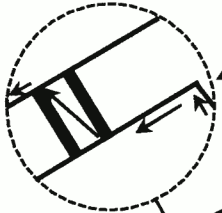
PRESENTED BY THE PUBLIC SCHOOL FOUNDATION & FLEET FEET SPORTS



**LANE USAGE**—Make sure turns are clearly marked or manned  
**by course monitors**

- E. Franklin—entire road
- Boundry—entire road
- Country Club—left bike-path /walkway only
- Gimghoul—left lane only
- Glandon—entire road
- Evergreen—entire road
- Glandon—entire road
- Gimghoul—left lane only
- Country Club—cross in crosswalk then right sidewalk only
- Ridge—right sidewalk only
- Stadium—cross straight across intersection then left sidewalk
- South—cross in cross walk then right sidewalk only
- S. Columbia—right sidewalk only
- Cameron -- cross straight across intersection then left sidewalk
- McCorkle Place -- east-most sidewalk before Old East

**RUNNERS MUST STAY WITHIN THE CROSSWALKS!**



- START:** On E. Franklin St, at entrance to Morehead Planetarium parking lot, marked on right with nail /washer and orange paint. (see detail) **N35°54.880" / W079° 03.098"**
- 1-MILE:** Corner of Glandon and Evergreen 5' past fire hydrant on right nail/washer with orange paint 1M. **N35°54.779" / W079° 02.487"**
- 2-MILE:** 6' past manhole cover near entrance to Henry stadium. Nail and washer **NO PAINT**. **N35°54.408" / W079° 02.558"**
- 3-MILE:** Sidewalk E Cameron, nail/washer **NO PAINT** 13' past lamp post #0296 before the Old Well. **N35°54.718" / W079° 03.078"**
- FINISH:** Sidewalk in front of Alumni Hall, nail /washer **NO PAINT** west edge of sidewalk. (see detail) **N35°54.791" / W079° 03.081"**