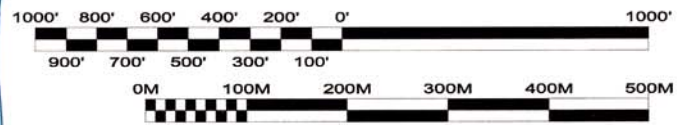


HARRISON HILLS PARK
 COUNTY OF ALLEGHENY
 BIRDVILLE GEOLOGICAL SURVEY
 16 OCTOBER 2014 EDITION

COUNCIL OF FRIENDS OF HARRISON HILLS PARK
 friendsofharrihillspark.org

IN CASE OF EMERGENCY:
 CALL THE COUNTY POLICE AT 412-473-3000
 OR DIAL 911 FOR LOCAL POLICE

FOR GROVE RENTALS, CALL 412-350-2455



US & METRIC GRAPHIC SCALES
 CONTOUR INTERVAL = 20' (6.096M)
 SCALE: 1:7,500 (1 INCH = 625 FEET)

MAP LEGEND

- AED AT MAINTENANCE OFFICE
- MAP KIOSK LOCATION
- PAVED ROAD
- UNPAVED ROAD
- TRAIL
- OVERHEAD UTILITIES, POLE
- DRINKING WATER
- STREAM/POND
- BUILDINGS
- REST ROOMS
- PICNIC SHELTER
- OBSERVATION BLIND
- SCENIC OVERLOOK
- PARKING AREA
- WOODS
- CLEARING
- CONTOUR
- HIKING TRAILS
 - RACHEL CARSON 3.4mi.
 - SCOUTS' 5.2mi.
 - WETLANDS 2.2mi.
 - WOODLANDS 1.3mi.
 - POND LOOP 1.2mi.
 - SPICEBUSH 1.2mi.
 - CREEKSIDE 0.6mi.
- TRAILHEAD SIGNS



ALLEGHENY RIVER
 NORMAL POOL
 ELEVATION 745

INFORMATION SOURCES:
 UNITED STATES GEOLOGICAL SURVEY
 COUNTY OF ALLEGHENY PARKS DIVISION
 ON-SITE OBSERVATIONS BY
 BIRDVILLE TROOP 186

KIOSK CONSTRUCTION LEADER:
 Ryan Davs, Eagle Scout, Birdville Troop 186
 MAP AND KIOSK DESIGN:
 Bob Barrage, Scoutmaster, Birdville Troop 186
 KIOSK MAP PRINTING:
 Alle-Kiski Medical Center
 "Promoting Healthy Life Styles"

