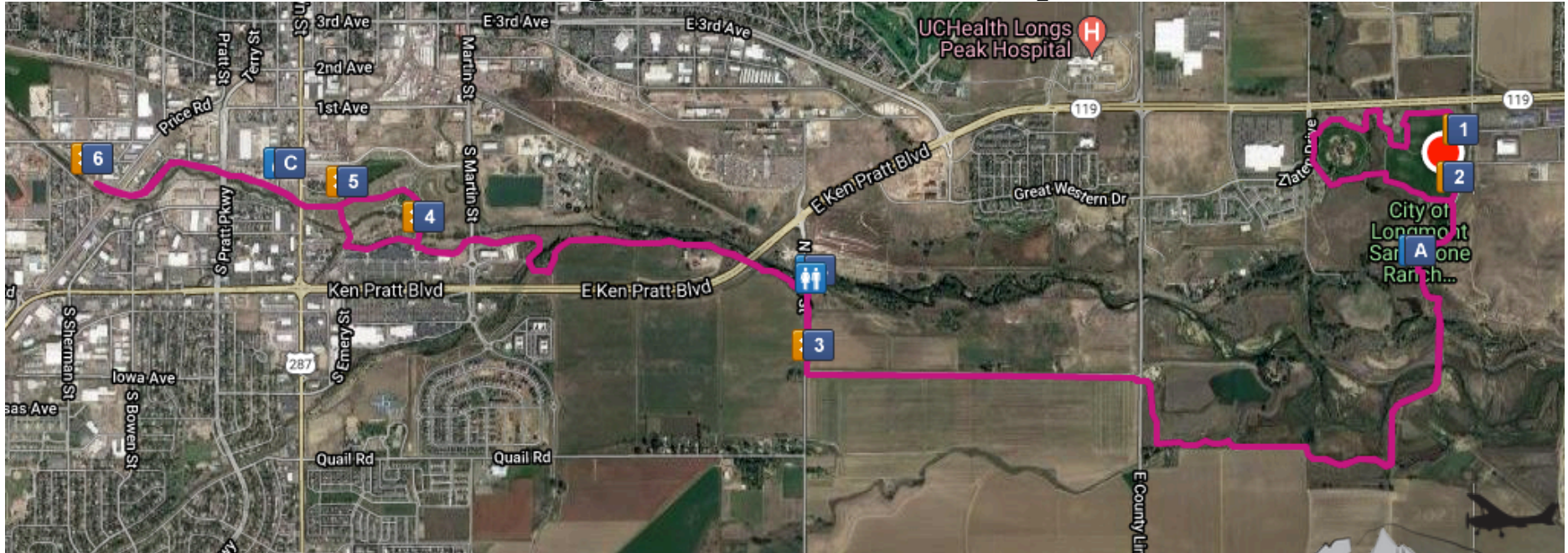


Longmont Half Course Map



From the start, you will run counter clockwise around the park. When you reach the south-east corner, you exit Sandstone Ranch and then you'll follow the road for a short time to the visitor's center and enter the trail system. From there, you'll face the mountains for many miles, running west to a turn around location (just before Left Hand Brewery) Turn around and run back the way you came, past the nature center, up the final (tough) hill and DIRECTLY to the finish line. You do NOT loop the park upon the return, just up the hill and to the finish!

