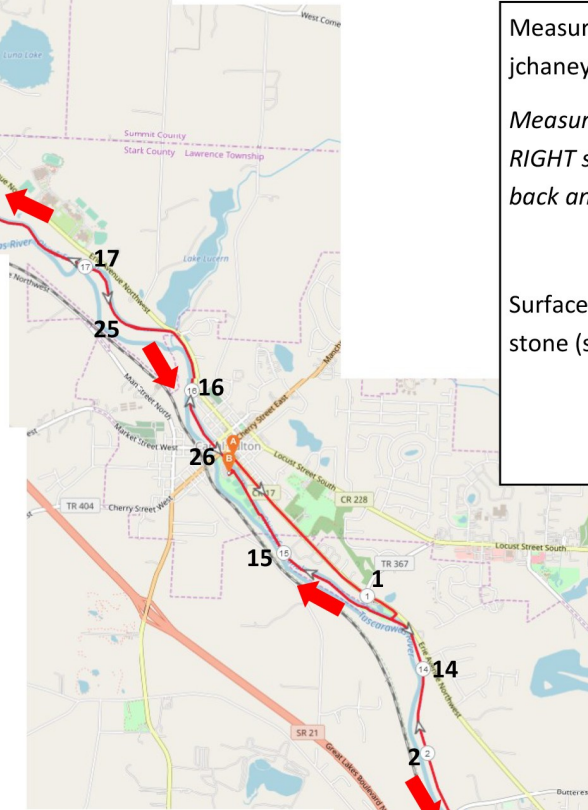
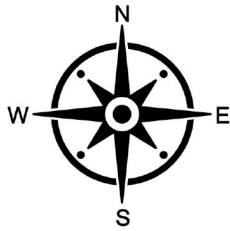


## Haunted Forest Marathon

Canal Fulton, OH

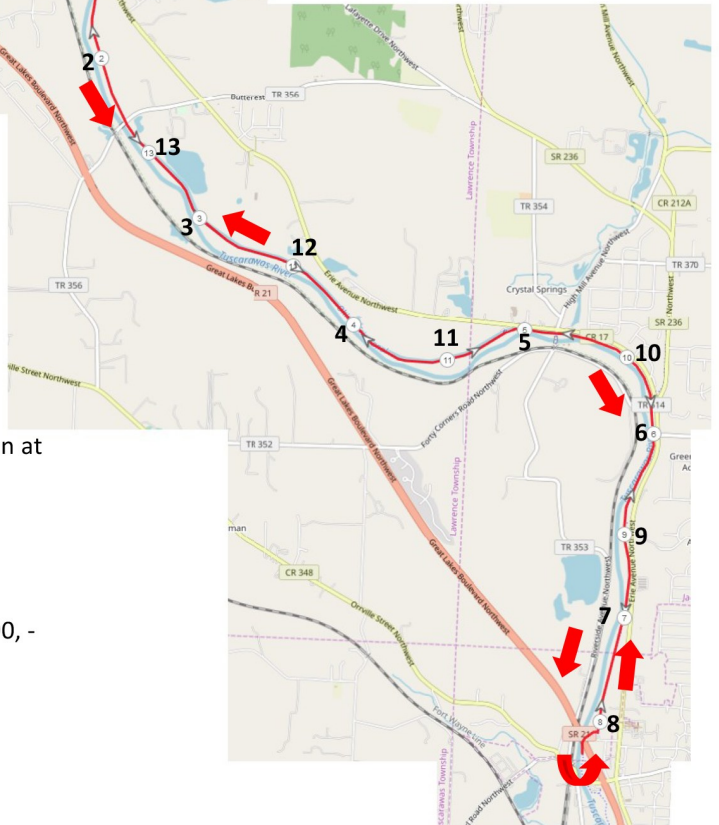
Distance: 42.195 KM



Measured by Jim Chaney on 10/11/2024 -  
jchaney@runtoyouracing.com

*Measured on the shortest possible route using the RIGHT side of the towpath trail. The course is out and back and runners will keep to their RIGHT.*

Surface is Cement, Blacktop, and HARD Crushed Lime-stone (same consistency as cement)



### COURSE TURN BY TURN

South on Canal St South to Lock 4 / Towpath entrance

South on Towpath Trail to the 180 turn marker in Massillon at  
GPS -40.814061, -81.529691

North on the Towpath Trail to 180 turn marker in Franklin  
Township at GPS -40.945344, -81.618955

South on the Towpath Trail to the Final Turn at -40.887790, -  
81.597015

West into the parking lot to the Finish Line



### 180 Degree Turn Around - NORTH in Franklin Township

290 Meters from Center Street at the Franklin Trailhead heading SOUTH on the Towpath Trail / 12 meters SOUTH of the 1/4 mile Stark Parks post SOUTH of the Franklin Trailhead.



### 180 Degree Turn Around - SOUTH in Massillon

266 Meters NORTH from the Second Sole Parking Lot / Towpath entrance on the Towpath Trail | ALSO | 3 Meters South of the drainage pipes near the



### MILE LOCATIONS

1	-40.878535	-81.583872
2	-40.866666	-81.577767
3	-40.854543	-81.567993
4	-40.846557	-81.552587
5	-40.846151	-81.535517
6	-40.838286	-81.522664
7	-40.824364	-81.525561
8	-40.816521	-81.528007
9	-40.830689	-81.525571
10	-40.844066	-81.525378
11	-40.843879	-81.543242
12	-40.850956	-81.558627
13	-40.859541	-81.573014
14	-40.872945	-81.578207
15	-40.88169	-81.592144
16	-40.893978	-81.601253
17	-40.903555	-81.612142
18	-40.909305	-81.629115
19	-40.922017	-81.632656
20	-40.935214	-81.626701
21	-40.943456	-81.620243
22	-40.93106	-81.628852
23	-40.917518	-81.634024
24	-40.907638	-81.623451
25	-40.899906	-81.609095
26	-40.889728	-81.600577



**FINISH LINE** - Even with the Electrical Box on the Cement Stand inside St Helena Park in the parking lot. Runners enter from the EAST off of the Towpath Trail.

**START LINE** - 3rd Parking Meter from the NORTHERN edge of the US Post Office Building at 210 Canal St N, Canal Fulton, OH 44614 with the runners heading SOUTH.