



**PRRF FAMILY
CONNECTION**
CONFERENCE 2026



PRRF



HOPE FOR **VISION**
WALK 2026

SPONSORSHIP DECK



**pediatric
retinal
research
foundation**

Monica Merlis Matthews
Development Manager
monica@prrf.org
215-490-9434
www.prrf.org

GET TO KNOW US



Our Mission

To raise awareness of pediatric retinal diseases, drive research, and support the community of affected individuals and their families.

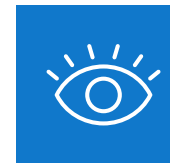


What We Do:

We **invest in research** to uncover the causes, treatments, and cures for pediatric retinal diseases, while also **supporting families**.

RESEARCH INITIATIVES

- Oakland University's state-of-the-art Pediatric Retinal Research Lab
- Empower future vision leaders through Oakland University SUPER Scholars program
- The Ophthalmic Biobank that stores tissue samples to drive retinal research
- DNA sequencing to identify genetic causes of retinal diseases



Pediatric Retinal Diseases

Coats' Disease • Familial Exudative Vitreoretinopathy (FEVR) • Norrie Disease • Persistent Fetal Vasculature Syndrome (PFVS) • Retinopathy of Prematurity (ROP) • Congenital X-Linked Retinoschisis • Stickler Syndrome

COMMUNITY INITIATIVES

- Annual Family Connection Conference
- *Through Our Eyes* Podcast and *Sightlines* Newsletter
- Parent and Patient Support Network
- Hope for Vision Walk

PARTNERSHIP OPPORTUNITIES



**PRRF FAMILY
CONNECTION**
CONFERENCE 2026

SATURDAY, APRIL 18TH, 2026 at Oakland University (Rochester, MI) and Virtual

Each year, we bring together families, world-renowned researchers, and leading clinicians for the only conference dedicated exclusively to pediatric retinal diseases. This event features a keynote speaker, expert panel with Q&A, and a tour of the Pediatric Retinal Research Lab. Past topics have included genetic testing, emerging therapies, mental health, caregiving, and navigating school IEPs. **This year's focus will be on assistive technology and AI**, an exciting and rapidly evolving area of hope for our community. At its heart, the conference brings families together to share experiences, find strength, and build lasting connections.



SUNDAY, APRIL 19TH, 2026 at Oakland University (Rochester, MI) and Virtual

Our annual Hope for Vision Walk brings together supporters, families, and advocates to raise funds and awareness for pediatric retinal disease research and community programs. Participants can join with us virtually or in-person for a fun morning of walking, games, refreshments, and community connection.





**PRRF FAMILY
CONNECTION**
CONFERENCE 2026

SPONSORSHIP PACKAGES

PRESENTING SPONSOR - \$10,000

- Logo and listed as "Presented by" on all conference materials
- Opportunity to give welcome remarks
- May distribute promotional item to all attendees
- Exhibitor booth
- One dedicated eblast promoting your business
- Feature shared on social platforms (1,000+ followers)
- Mention in *Sightlines* (e-newsletter with 1,100+ subscribers)
- Listing in Annual Impact Report

KEYNOTE SPONSOR - \$5,000

- Logo on all conference materials
- Opportunity to introduce keynote speaker
- May distribute promotional item to all attendees
- Exhibitor booth
- Highlight on social platforms (1,000+ followers)
- Mention in *Sightlines* (e-newsletter with 1,100+ subscribers)
- Listing in Annual Impact Report

ASK THE DOC SPONSOR - \$2,500

- Logo on all conference materials
- May distribute promotional item to all attendees
- Exhibitor booth
- Highlight on social platforms (1,000+ followers)
- Listing in Annual Impact Report

BREAKOUT SESSION SPONSOR - \$1,000

- Logo on all conference materials
- Highlight on social platforms (1,000+ followers)
- Listing in Annual Impact Report

EXHIBITOR - \$500

- Display table





SPONSORSHIP PACKAGES

PRESENTING SPONSOR - \$10,000

- Logo and listed as "Presented by" on all event materials/t-shirts
- Hyperlinked logo on event website
- May distribute promotional item to all attendees
- One dedicated eblast promoting your business
- Feature shared on social platforms (1,000+ followers)
- Mention in *Sightlines* (e-newsletter with 1,100+ subscribers)
- Listing in Annual Impact Report

VISIONARY SPONSOR - \$5,000

- Logo on all event materials/t-shirts
- Hyperlinked logo on event website
- May distribute promotional item to all attendees
- Highlight on social platforms (1,000+ followers)
- Mention in *Sightlines* (e-newsletter with 1,100+ subscribers)
- Listing in Annual Impact Report

UNITY SPONSOR - \$2,500

- Logo on all event materials/t-shirts
- Hyperlinked logo on event website
- May distribute promotional item to all attendees
- Highlight on social platforms (1,000+ followers)
- Listing in Annual Impact Report

CHAMPION SPONSOR - \$1,000

- Logo on all event materials/t-shirts
- Hyperlinked logo on event website
- Highlight on social platforms (1,000+ followers)
- Listing in Annual Impact Report





DUAL EVENT SPONSORSHIP VALUE PACKAGES

SATURDAY, APRIL 18 & SUNDAY, APRIL 19, 2026

PRESENTING WEEKEND SPONSOR - \$17,500

- Logo and listed as "Presented by" on both event materials
- Opportunity to give welcome remarks at both events
- May distribute promotional item at both events (audience varies)
- Exhibitor table at both events
- One dedicated eblast promoting your business
- Special feature shared on social platforms (1,000+ followers)
- Mention in *Sightlines* (e-newsletter with 1,100+ subscribers)
- Listing in Annual Impact Report

GOLD WEEKEND SPONSOR - \$8,500

- Logo on both event materials
- Opportunity to introduce keynote speaker at conference
- May distribute promotional item at both events (audience varies)
- Exhibitor table at both events
- Highlight on social platforms (1,000+ followers)
- Mention in *Sightlines* (e-newsletter with 1,100+ subscribers)
- Listing in Annual Impact Report

SILVER WEEKEND SPONSOR - \$4,500

- Logo on both event materials
- May distribute promotional item at both events (audience varies)
- Exhibitor table at both events
- Highlight on social platforms (1,000+ followers)
- Listing in Annual Impact Report

BRONZE WEEKEND SPONSOR - \$1,800

- Logo on both event materials
- Highlight on social platforms (1,000+ followers)
- Listing in Annual Impact Report

EXHIBITOR - \$1,000

- Display table at both events



PRRF FAMILY
CONNECTION
CONFERENCE 2026



PRRF
HOPE FOR VISION
WALK 2026

LET'S CONNECT



For more information on how to become a sponsor, contact:

Monica Merlis Matthews

Development Manager

monica@prrf.org

215-490-9434



**pediatric
retinal
research
foundation**

8424 E 12 Mile Road, Suite B2
Warren, MI 48093

www.prrf.org

[Facebook](#) | [LinkedIn](#) | [YouTube](#) | [Podcast](#)