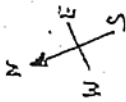
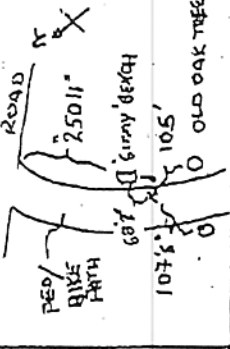


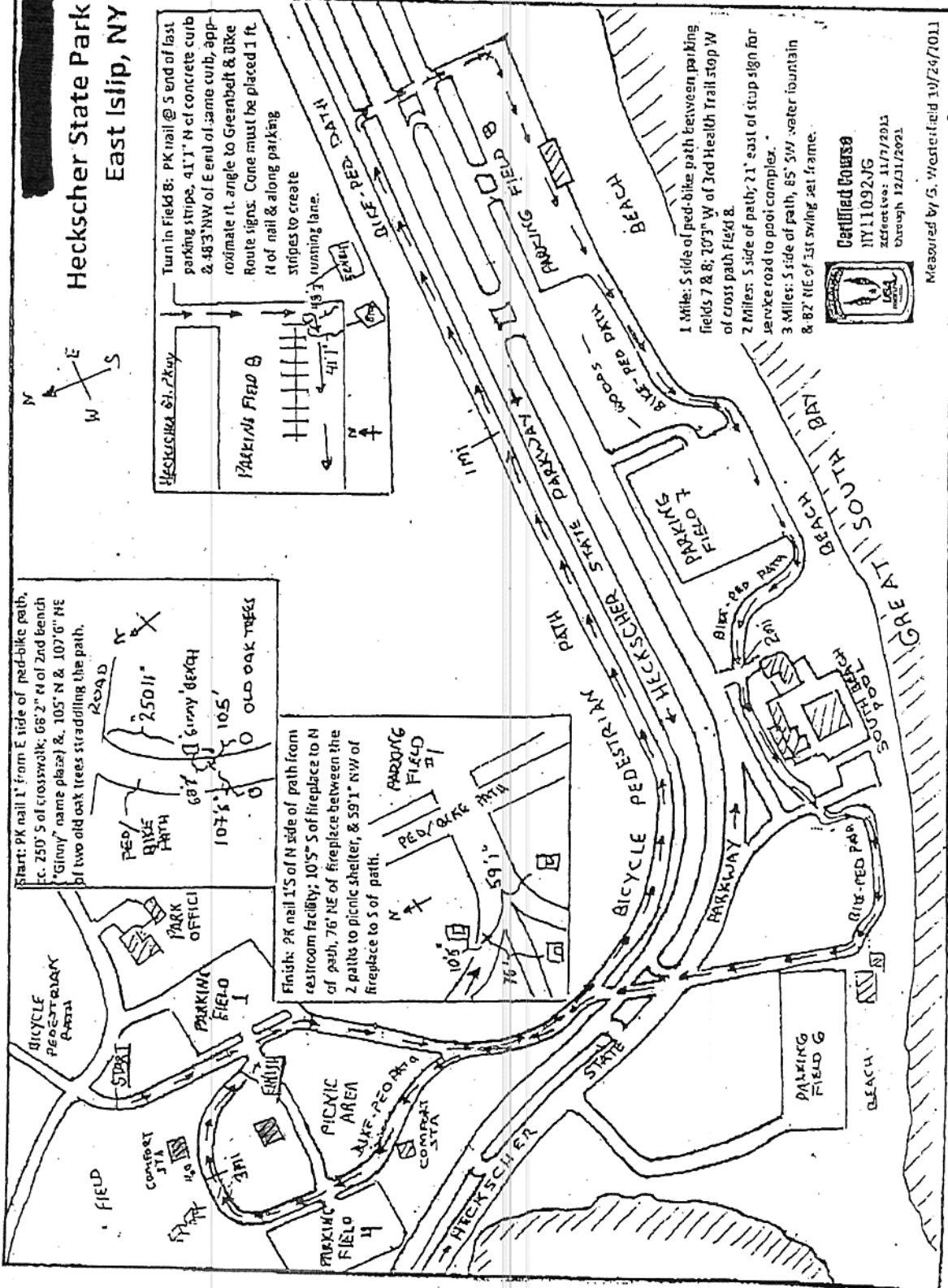
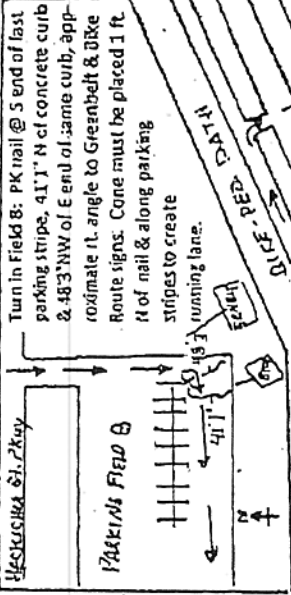
Heckscher State Park East Islip, NY



Start: PK nail 1' from E side of ped-bike path, c. 250' S of crosswalk, 68'2" E of 2nd Bench "Girny" name plate) & 105' N & 107'6" NE of two old oak trees straddling the path.



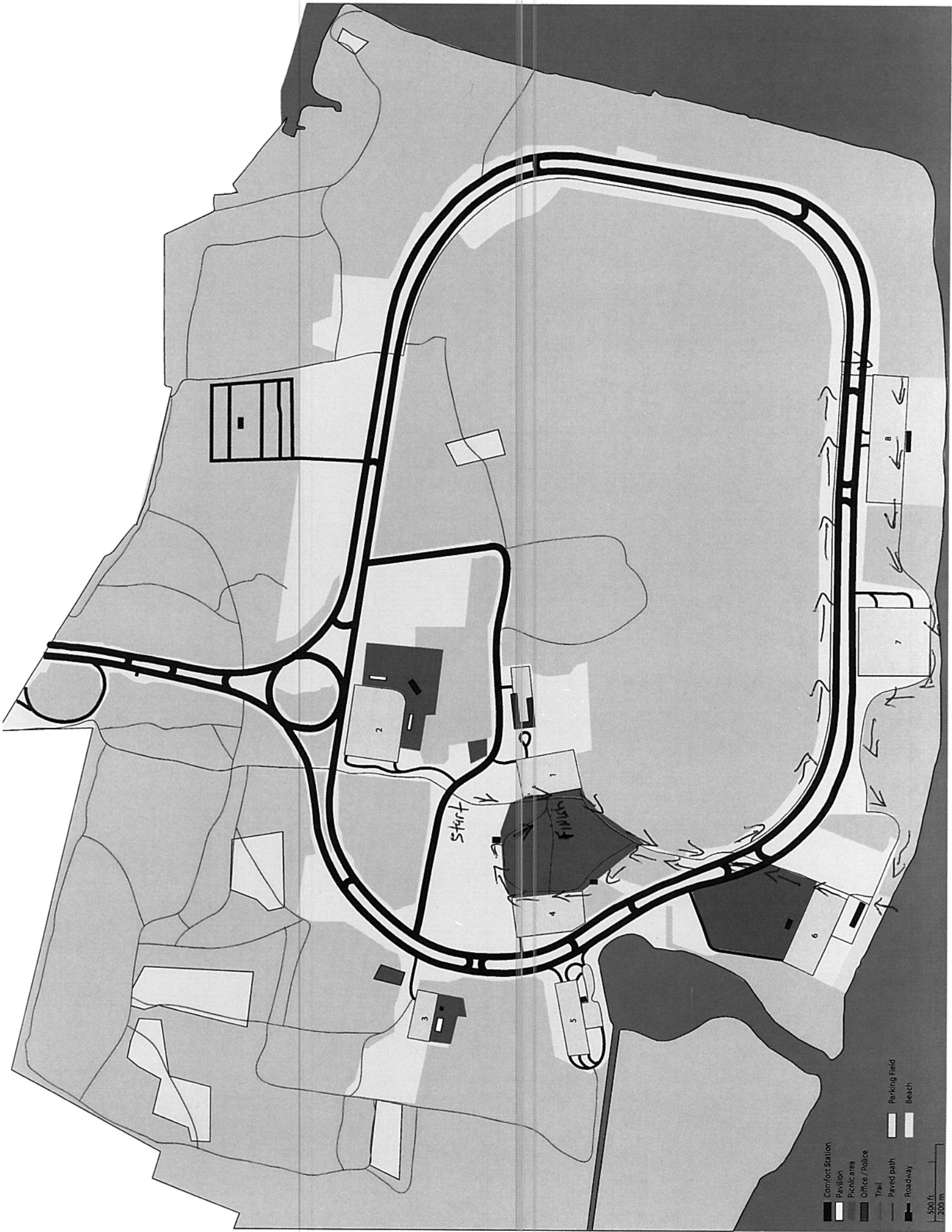
Finish: PK nail 1' S of N side of path from restroom facility; 10' S of fireplace to N of path, 76' NE of fireplace between the 2 paths to picnic shelter, & 59'1" NW of fireplace to S of path.



- 1 Mile: S side of ped-bike path between parking fields 7 & 8; 20'3" W of 3rd Health Trail stop W of cross path Field 8.
- 2 Miles: S side of path; 21' east of stop sign for service road to pool complex.
- 3 Miles: S side of path, 65' SW water fountain & 82' NE of 1st swing set frame.



Measured by G. Westerland 10/24/2011



- Comfort Station
- Pavilion
- Picnic area
- Office / Police
- Trail
- Paved path
- Roadway
- Parking Field
- Beach

500 ft
200 m