



2025 DUST BOWL 100

Technical Guide



ZIPP

*GO BIG.
GO GRAVEL.*



303 XPLR SW

The fastest wheelset for every gravel racer.



MAKING YOU FASTER

TABLE OF CONTENTS

- 4) [Welcome](#)
- 5) [About Eminence](#)
- 6) [Supporting](#)
- 7) [Schedule of Events](#)
- 8) [Friday Details](#)
- 9-10) [Race Day Details](#)
- 11) [Parking](#)
- 12) [Venue Layout](#)
- 13) [Rules of the Dust Bowl 100](#)
- 14-18) [Course Info](#)
- 19-22) [SAG Stop Info](#)
- 23) [Drop Bag Service](#)
- 24) [Outside Support / Spectator Guide](#)
- 25-26) [Timing Tag / Results / RaceJoy Live Tracking](#)
- 27) [Swag / Awards](#)
- 28) [Vendor Expo Details](#)
- 29) [Wi-Fi Access / FasCat Training Tips](#)
- 30-31) [SILCA Discount / Gear Checklist](#)
- 32) [Zipp's Four Tips to Make You Faster at Dust Bowl 100](#)
- 33) [Local Bike Shops](#)
- 34) [Sponsor Discounts!](#)
- 35-36) [Camping and Lodging Info](#)
- 37-38) [Favorite Restaurants and Local Attractions](#)
- 39) [Artist Bios for the Air National Guard Stage](#)
- 40) [Sponsors](#)



WELCOME

5 years and 1,000 participants. Those have been two benchmarks I have dreamed of reaching since the time the Dust Bowl 100 was just a crazy idea in my mind. We've been blessed to see steady growth (adding and selling out 200 additional spots every year) and eclipsed the 1,000-participant mark in 2024. And while last year also marked the 5th time a group of people raced the Dust Bowl route (if you include the small, free test run in 2020), we are officially hitting the 5-year mark for the event this year!

But I can't and won't take credit for those accomplishments; instead, the Dust Bowl's success is because of YOU! Each and every one of you.

If you're a Dust Bowl veteran, thank you for coming back. Thank you for spreading the word. Thank you for providing constructive feedback and timely encouragement. Thank you for volunteering, making sponsor connections, and tagging us in social media posts. And thank you for rocking the Dust Bowl swag at events all across the country!

If this is your first Dust Bowl, thank you for signing up. Thank you for trusting us to provide you with an event experience that is worth the entry fee. Thank you for spending a weekend of your summer in Eminence, Indiana. Welcome to the Dust Bowl family!

I can't wait to celebrate #5 with y'all!

Marc O'Leary
Dust Bowl 100 Race Director
[Elevate Endurance LLC](#)



ABOUT EMINENCE

The Dust Bowl 100 event headquarters will again be located on the Eminence Community School grounds in Eminence, Indiana.

Eminence is situated on the western edge of Morgan County and is conveniently located just 7 minutes off Interstate 70 and only 30 minutes west of downtown Indianapolis. State Roads 42 and 142 intersect in Eminence, making it easily accessible for participants coming from all directions.

The town was laid out in 1855 and has had a post office in operation since 1857. For over 100 years the Eminence Community School Corporation has served the youth of Eminence and surrounding Adams and Ashland townships. Today, the corporation has a student population of approximately 395 students in grades PK through 12.

In addition to the post office, Eminence is home to two churches, the A&A Fire Department, and a branch of Citizens Bank.

And, in case you need any last-minute nutrition or hydration needs, the Eminence Dairyland convenience store is also located in town (0.2 miles from the Dust Bowl parking) and will be open from 7:00am through 10:00pm the day of the Dust Bowl.



DUST BOWL 100 SUPPORTS:

The Dust Bowl 100 was able to support the following programs and initiatives in 2024:

- 15 bicycles donated to students in the [Eminence Community Schools](#) system
- \$2,576 raised for the Eminence Athletic Department
- \$1,555 raised for Eminence Junior High through the SILCA Bike Wash Station
- \$1,000 donated to [Bicycle Indiana](#) as a Funding Ride
- 10 full student scholarships funded for the 2024 [Indiana Interscholastic Cycling League \(NICA\)](#) season
- 1,000 food items donated to the Eminence Christian Church food pantry
- Monetary donations to the [A&A Fire Department](#) and [Putnam Parks & Pathways](#) to support their work in the local communities.



SCHEDULE OF EVENTS

Friday, July 25th (all at [Eminence Schools](#))

(all times EDT)

- 12:00pm – Early Packet Pickup begins / On-site camping check-in begins
- 12:00pm – Vendor Expo opens
- 12:00pm – FasCat Coaching Shakeout Ride with Coach Jake Rytlewski
- 2:30pm – Zipp Tech Session
- 3:00pm – Zipp Pre-Ride
- 5:00pm – SILCA x Lunchbox Racing Shakeout Ride with Drew Dillman
- 5:00 – 7:30pm – Lasagna Dinner catered by Almost Home Restaurant
- 6:00pm – Kids' Race
- 8:00pm – Packet Pickup and Vendor Expo close

Saturday, July 26th

- 6:00am – Check In/Packet Pickup opens
- 7:50am – Riders' Meeting (**all distances**) at the start/finish line (**required**)
- 7:55am – Drop Bags must be loaded into the SAG truck
- 8:00am – 100 Mile START!*
- 8:15am – 100K START!*
- 8:30am – 44 Mile START!*
- 11:00am – Post-race meal available - BBQ & Shaved Ice (**vegan** options available)
- Podium presentations will take place at 12:00pm, 1:45pm, 3:30pm, and 5:00pm (each category's podium time is dependent on when the 3rd place rider for that category finishes)
- 12:30pm – First round of Drop Bags returned to Eminence (pick up by tent)
- 12:30pm – Live music from Ryan Young on the Air National Guard stage
- 2:15pm – Live music from Yellow American Spirits on the Air National Guard stage until 5:00pm
- 3:00pm – All remaining Drop Bags returned to Eminence (pick up by tent)
- 6:00pm – Official Race Cut-Off Time;

* Separate, neutral mass start for each distance
(lead car will pull off at mile 2.5 at which point the race will commence)

** SAG cut-off times are listed in the *SAG Stop* section



FRIDAY DETAILS

All Friday (7/25) activities will take place in Eminence this year.

[6760 State Road 42 North, Eminence, IN US 46125](#)

Vendor Expo (12:00pm – 8:00pm): Over a dozen vendors will be on-site with giveaways, demos, and more. See the Vendor Expo section on page 28 for additional details and a list of all vendors.

Early Packet Pickup (12:00pm – 8:00pm): Check in and grab your bib, swag bag, and race t-shirt on Friday so it's one less thing you have to worry about race morning! Takes place in the main DB100 tent.

FasCat Coaching Shakeout Ride (12:00pm): Join FasCat Coach (and Dust Bowl photographer) Jake Rytlewski for the first shakeout ride of the day. The ride will leave from the main Dust Bowl tent.

➤ Route will be 16 miles (RidewithGPS [route](#); Strava [route](#)).

Zipp Tech Session (2:30pm): Vance Nonno of SRAM Technical University will host a tubeless tire repair info and Q&A session at the Zipp tent.

Zipp Pre-Ride (3:00pm): For those of you that would like a sneak peak of the Dust Bowl 100 course, Zipp will be leading an official pre-ride of a portion of the course. Ride will leave from the Zipp arch.

➤ Route will be 21 miles and will include the first 6 miles and last 11 miles of the course (RidewithGPS [route](#); Strava [route](#)).

SILCA x Lunchbox Racing Shakeout Ride (5:00pm): Join 2x Dust Bowl 100 champion Drew Dillman for the final shakeout ride of the day. The ride will leave from the SILCA tent at the vendor expo.

➤ Route will be 20 miles (RidewithGPS [route](#); Strava [route](#)).

Lasagna Dinner (5:00pm – 7:30pm): Local favorite dining spot [Almost Home Restaurant](#) will be catering a lasagna dinner on Friday night. The meal will include lasagna (traditional or veggie option), bread sticks, garden or Caesar salad, fresh baked cookies, and drinks. Dinner tickets are \$10/person; you must pre-pay for your meal by purchasing a meal ticket at dustbowl100.com/store.

Kid's Race (6:00pm): FREE for kids 12 and under! This will take place entirely on the Eminence Community Schools property on a closed course. It will be a ½ mile loop that starts under the official Dust Bowl 100 arch, goes through the vendor expo area, travels down a gravel drive, and then utilizes the final ¼ mile of the official Dust Bowl 100 course to finish. All participants will receive an award! While there is no cost to participate, all kids must be registered at dustbowl100.com.

Camping: On-site camping options are available Friday and Saturday nights. See page 35 for full camping details.



RACE DAY DETAILS pre-race

Check In/Package Pickup: All participants that do not pick up their packet Friday will need to do so Saturday morning (7/26). **Check In will open at 6:00am, and close at 8:15am.**

****Riders' Meeting**:** We will have a **mandatory** pre-race Rider's Meeting for **ALL distances/categories** at 7:50am. This will take place at the start/finish line. 100 mile riders should line up in the staging area for the meeting and subsequent race start (see page 12 for this location); 100K and 44 mile riders can congregate in the overflow staging area (see page 12) or near the registration tent. We will be giving out some vital race information as well as giving away some big prizes during the riders' meeting so don't miss this!

Donuts/Coffee: Hot coffee and donuts from [Al's Donuts](#) and will be available for all participants before the race, courtesy of [Julie Davis/F.C. Tucker](#)!

Restrooms: Porta-potties will be available near the start/finish line. The permanent restrooms at the Eminence baseball facility will also be unlocked and available for use.

Team Tents: Teams and participants are welcome to set up tents in our designated location (near the playground). See the Venue Map on page 12 for the Team Tent location. **Please note, alcohol is not allowed on the Eminence Community Schools property (nor at any other venues used by the event).**

Giveaways: In addition to the Riders' Meeting giveaways, we'll have other random giveaways from our sponsors throughout the day (including Eliel, UNDRBUDR, Rudy Project, Specialized and USWE).

Photos: [John Lobban Creative](#) will be providing the official finish line pictures, as well as on-course photography throughout the day. [Jake Rytlewski](#) will also be out on course capturing drone footage, and supplemental photos will be available from Jake, Lexi Rose, and John Whalen. Links to all photos captured during the day will be shared on dustbowl100.com within a few days of the race.



RACE DAY DETAILS post-race

Post-Race Meal: All participants will receive a free post-race meal and shaved ice. Smokin' J's BBQ will be providing the lunch (choice of pulled pork, chicken, or a **vegan** option, plus sides and drinks), while [Frigid Frog](#) will be providing shaved ice. You will receive a race number bib that will have tear off tickets for both the meal and shaved ice at the bottom (the number bib will then go in your Drop Bag if you're utilizing that service – please make sure to tear off the meal tickets before putting the number in your drop bag).

SILCA Bike Wash Station: The Dust Bowl is aptly named, so we know many of you will want to clean your bike before loading it up and heading home. Thanks to [SILCA](#), we'll have a bike wash station available on-site stocked with their line of [bike care products](#). **Students from Eminence Middle School will be assisting with the SILCA Bike Wash Station and will be accepting free-will donations in exchange for the bike wash (they will be raising funds for field trips, guest speakers, and class shirts). So please bring a few bucks to throw their way!** Lastly, a thank you to [Pheifer's Saw Shop](#) who has provided Stihl pressure washers for use. See Venue Map on page 12 for location.

Showers: For \$5, shower/locker room facilities at the school will be available after the race from 11:00am to 6:00pm. This \$5 fee go directly to the Eminence Athletic Department. Enter school door #6 for shower access (see Venue Map on page 12).

First Aid: The Eminence A&A and Stilesville Fire Departments will have EMTs on-site all day to help clean up minor road rash and provide guidance on any other medical issues that may arise. There will be a "First Aid/Incident Reporting" tent right next to the main Dust Bowl 100 tent.

Podiums: Podium awards will be given to the top 3 finishers in each distance/age group. Presentations will take place at 12:00pm, 1:45pm, 3:30pm, and 5:00pm (each category's podium time is dependent on when the 3rd place rider for that category finishes). See the Awards section on page 27 for more details.

Live Music: Ryan Young will open with a set from 12:30-1:45pm, followed by Yellow American Spirits from 2:15pm – 5:00pm (page 39 has bios on each artist). After your race, clean up, grab some food and drink, pull up a chair and listen to some great music on the Air National Guard stage!



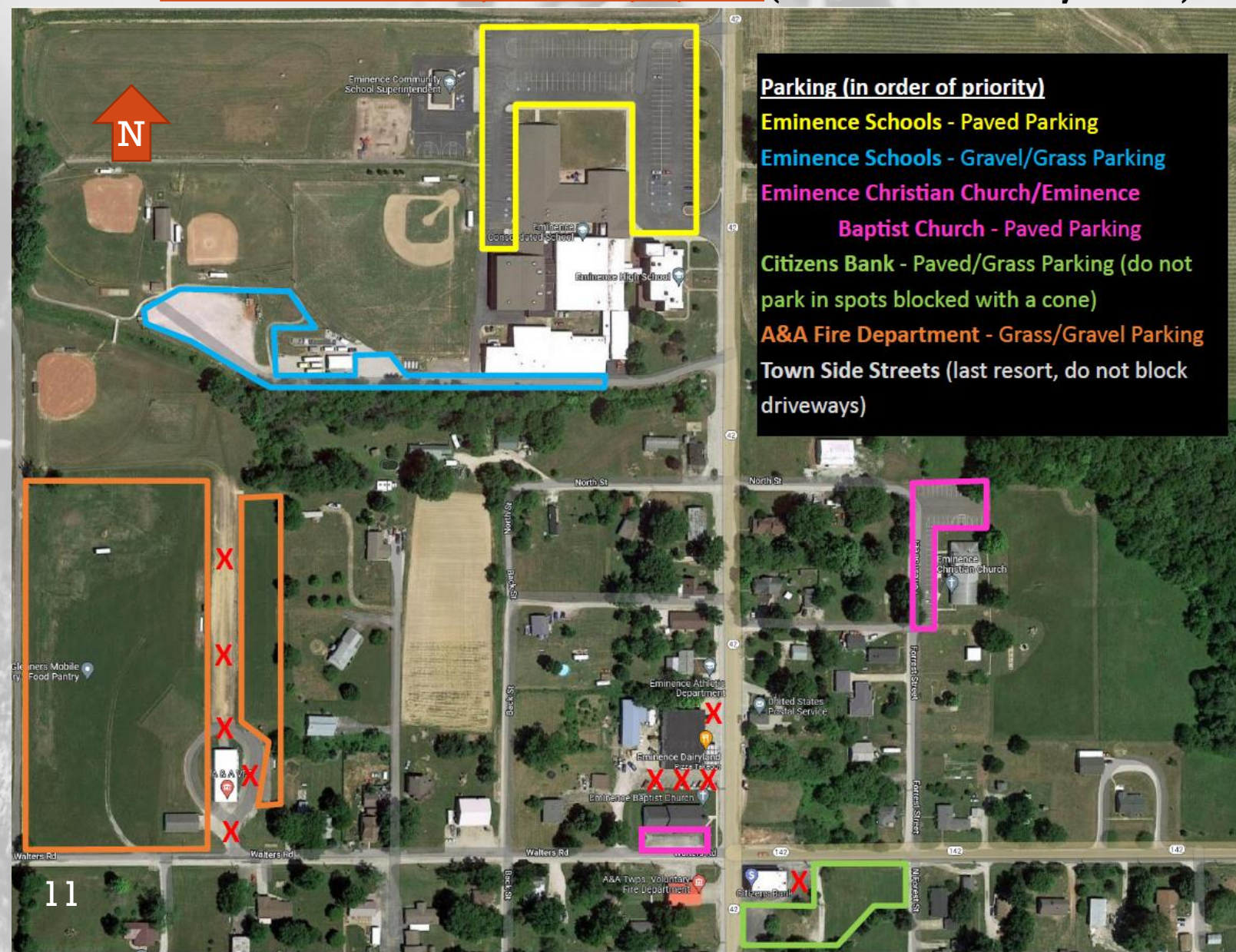
PARKING

While free parking is available for all participants, please note that there are limited surface lots available in Eminence; therefore, please adhere to these parking guidelines to ensure everyone has an accessible place to park and that the local residents and businesses are not impacted:

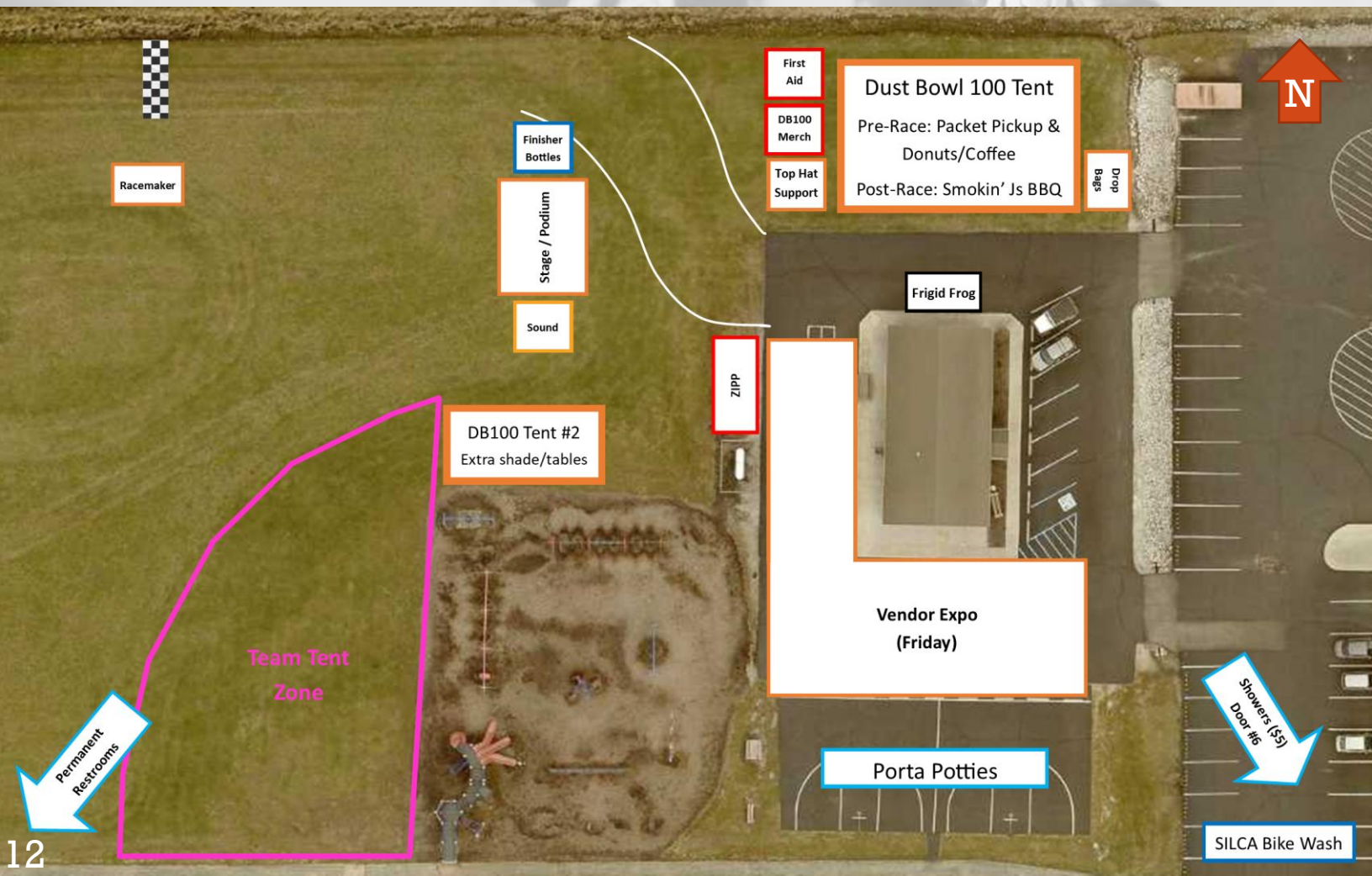
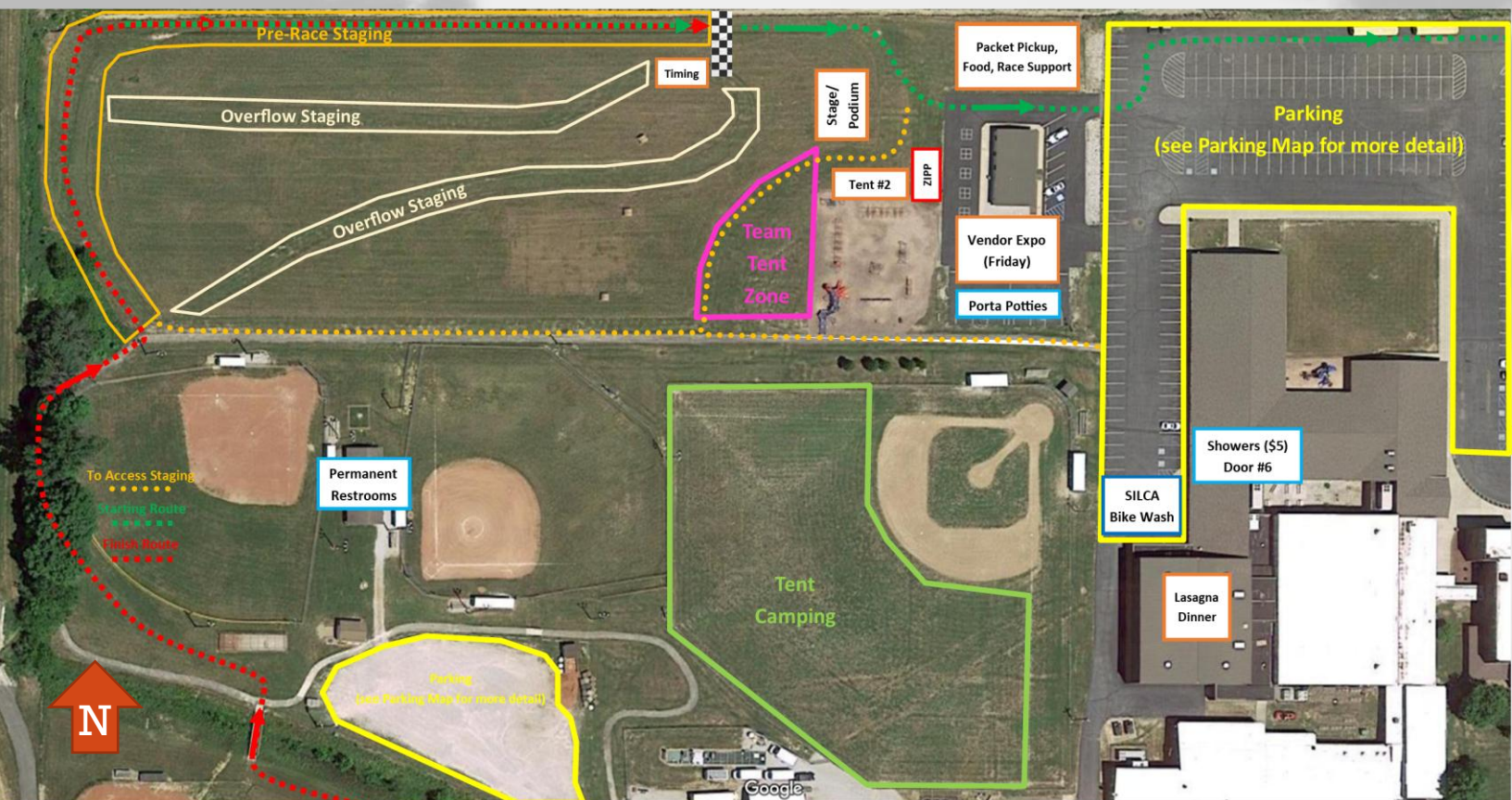
- Please carpool to the race if at all possible.
- If parking in a paved lot, only take up one space. If you need additional room, please park in one of the grass areas indicated on the map below.
- DO NOT park in handicap spots unless you have a handicap tag.
- Only park in the areas designated on the map below, OR on the side streets in town. If parking on the side streets, please do not park directly in front of homes or driveways.
- DO NOT park in the Eminence Dairyland lots, in the Citizens Bank spots blocked with a cone, or in any other areas marked with a red **X** on the map.

Those arriving first should park on the Eminence School grounds, but overflow parking is available at nearby Eminence Christian Church, Eminence Baptist Church, Citizens Bank, and the A&A Fire Barn property (all within 0.3 miles away).

Address: 6760 State Road 42 North, Eminence, IN, 46125 (Eminence Community Schools)



RACE VENUE LAYOUT



RULES OF THE DUST BOWL 100

1. **The Golden Rule.** Treat others how you want to be treated. Give high fives. Wave as you pass other riders. Speak politely. Share encouragement. We're all ambassadors for this great sport of cycling so let's act like it.
2. **Participants must obey ALL city, county, and state laws, and "Rules of the Road."** The course is open roads with car, pedestrian, and maybe even horse traffic. Yield to all vehicles and other pedestrians already on the roadway and stop at all stop signs (there are ZERO stop lights on course!). Ride no more than two abreast if at all possible. Follow the center-line rule by riding on the correct side of the road. Signal your turns.
Indiana bicycle laws: <https://iga.in.gov/laws/2024/ic/titles/9#9-21-11>
3. **Ride Safely. Promote Safety. In case of emergency, call 911.** All riders must wear a helmet at all times. Stay alert at all times. There are a few fast downhill sections; these will be marked with caution signage, so please ride within your abilities. Call out road hazards and large holes (but you don't need to call out "gravel" ☺). Do not pass the neutral rollout vehicle at the start. Ride with caution when cresting hills and going around blind corners. The race director, SAG drivers, and aid station captains may remove any rider from the event that they feel is a hazard to other participants or themselves.
4. **Only trust yourself for navigation.** We highly recommend you have the route pre-programmed into your bike computer and utilize it during the ride (see *Course Info* section for details). We will have signage on course indicating key turns, busy intersections, and upcoming hazards, but YOU ARE RESPONSIBLE FOR YOUR OWN NAVIGATION. Furthermore, physical signs are prone to vandalism and/or removal, so should not be trusted as the sole source of information/navigation. We will have a limited number of route cue sheets also available at the Registration Tent before the start.
5. **Don't litter.** Please respect the awesome people and towns along the Dust Bowl 100 route by not littering. They're letting us use their home as our playground, so please respect that and make sure to pocket all of your trash and hang on to all of your water bottles. We'll have trash cans at each SAG stop where you can dispose of trash as needed.
6. **Personal SAG vehicles and outside support is only allowed at the designated checkpoints.** See the *Outside Support* section for a list of these locations. **BOTTLE HANDUPS ARE NOT ALLOWED** – riders must be completely stopped to take on supplies.
7. **You are expected to fix your own equipment in case of mechanicals.** This is a self-supported event. If you get a flat or other mechanical you are expected to be able to fix it. That said, Crossroads Cyclery will provide neutral race support at the Endeavor Communications SAG stop (all distances) and Zipp will be at a couple other locations on course to assist with minor issues. We will also have a couple of roving SAG vehicles available to pick you up and bring you back to the finish if you are unable to fix your mechanical or continue with the race for any reason. However, the SAG vehicles will not be able to provide any mechanical assistance.
8. **No cutting the course, or advancing along the route by any means other than a bicycle (or by foot).** This will obviously result in disqualification and a removal from the official results if done to gain a competitive advantage. However, cutting the course due to a mechanical, injury, fatigue, or any other reason is permitted. Just let us know when you get back so that we can remove you from any potential awards (but you certainly can still enjoy the post-race meal and activities!).
9. **Your timing seatpost tag must be affixed to your seatpost at all times.** See *Timing Tag* section for additional info.
10. **Aero bars ARE legal.** But please use proper judgement and only use them when riding by yourself.
11. **E-bikes are only allowed in the 44 mile event** and must be registered in the E-bike category. This is a non-competitive category and no prizes will be awarded in this category.
12. **No alcohol allowed on course or on property owned by Eminence Community Schools, Eminence Christian Church, Eminence Baptist Church, Citizens Bank, or the A&A Fire Department.** Alcohol is not allowed on any of these properties. Please respect that rule so that these awesome hosts welcome us back in 2026.
13. **Failure to comply with any of these rules may result in disqualification and/or a ban from future events.**

*Additional rules may be added at the discretion of the race director as necessary



COURSE INFO

We're excited to share some of Midwest's finest gravel roads with you this summer! As you would expect from Indiana, you'll see plenty of farm fields along the Dust Bowl 100 route. But you'll also ride through heavily wooded areas, climb rolling hills, cruise through a few small towns, and cross many historic bridges.

As a whole, the gravel on the route is well maintained and is small to medium in size (a majority of the course would be rated Category 2 gravel on [Neil Shirley's International Standard Guide to Gravel](#), with a few Category 3 sections mixed in). A lot of the roads will have packed in travel lanes. That said, the County road crews have been known to freshly grade roads with little to no notice, so don't be surprised if you run into a couple sections of thick stuff on race day. Regarding tire size, a minimum of 38mm wide tires seems to be the norm, but many run much wider tires. Based on 2024 post-race survey data, 54% of participants said they would ride 35-40mm tires next time, and 42% said they'd run greater than 40mm tires.

The 100-mile route crosses US-40, IN-240, and IN-36 each twice, while the 100K route crosses both US-40 and IN-240 twice. Putnam County Deputy Sheriffs will be manning these intersections, but riders should still stop for traffic unless otherwise directed by the deputies. There are also a number of blind turns on course – riders must stop at all stop signs.

There are multiple bridges on course that are closed to vehicle traffic. There will likely be concrete barricades before and after these bridges. We will have these well marked with cones and signage, but please still use extreme caution:

100 mile course: bridges closed at miles 13, 65, and 74

100K course: bridges closed at miles 13 and 36

44 mile course: bridge closed at mile 13

There will be a few fast downhill sections on course, so please ride within yourself and utilize caution on these. **Two downhills of note are at mile 49 and mile 53 on the 100-mile route – these are steep downhill sections that lead into the two covered bridges.**

Additionally, the crushed limestone Vandalia Trail will be utilized on the 100K (**mile 27**) and 100-mile (**mile 67**) routes. Please note, this is an open trail and there may be other pedestrians using it during the race, so please be courteous when passing other trail users. There are a number of barriers/poles in the middle of the trail to prevent vehicle access; please be cautious when riding through these.

Lastly, CR 600S turns into a 2-track Jeep trail through the woods and is utilized on all 3 routes – 100-mile (**mile 84**), 100K (**mile 46**), and 44 (**mile 28**). There are some deep ruts, mud puddles, rocks, and debris along this section.

We strongly recommend you have the route pre-programmed into your bike computer and utilize it during the race. We will have signage on course indicating key turns, busy intersections, and upcoming hazards, but **YOU ARE RESPONSIBLE FOR YOUR OWN NAVIGATION.** Furthermore, physical signs are also prone to vandalism and/or removal, so should not be trusted as the sole source of navigation.

14 There will be a limited number of route cue sheets available at Registration.



100 MILE COURSE

PRESENTED BY BLUEGRASS BICYCLE COMPANY

- 60 miles of gravel
- 3,500 feet of elevation gain
- 7 historic bridges crossed
- 2 off-road adventure sections
- 4 SAG Stops (miles 26, 49, 62, 77) plus 1 water only stop (mile 88)



Ride with GPS Route: <https://ridewithgps.com/routes/49205204>

Strava Route: <https://www.strava.com/routes/3373495012620995454>



100K COURSE

PRESENTED BY PALMER TRUCKS

- 40 miles of gravel
- 1,800 feet of elevation gain
- 3 historic bridges crossed
- 2 off-road adventure sections
- 2 SAG Stops (miles 26 and 40) plus 1 water only stop (mile 50)

PALMER  **TRUCKS**
ON THE ROAD SINCE 1965

Ride with GPS Route: <https://ridewithgps.com/routes/48720859>

Strava Route: <https://www.strava.com/routes/3373496112249741182>



44 MILE COURSE

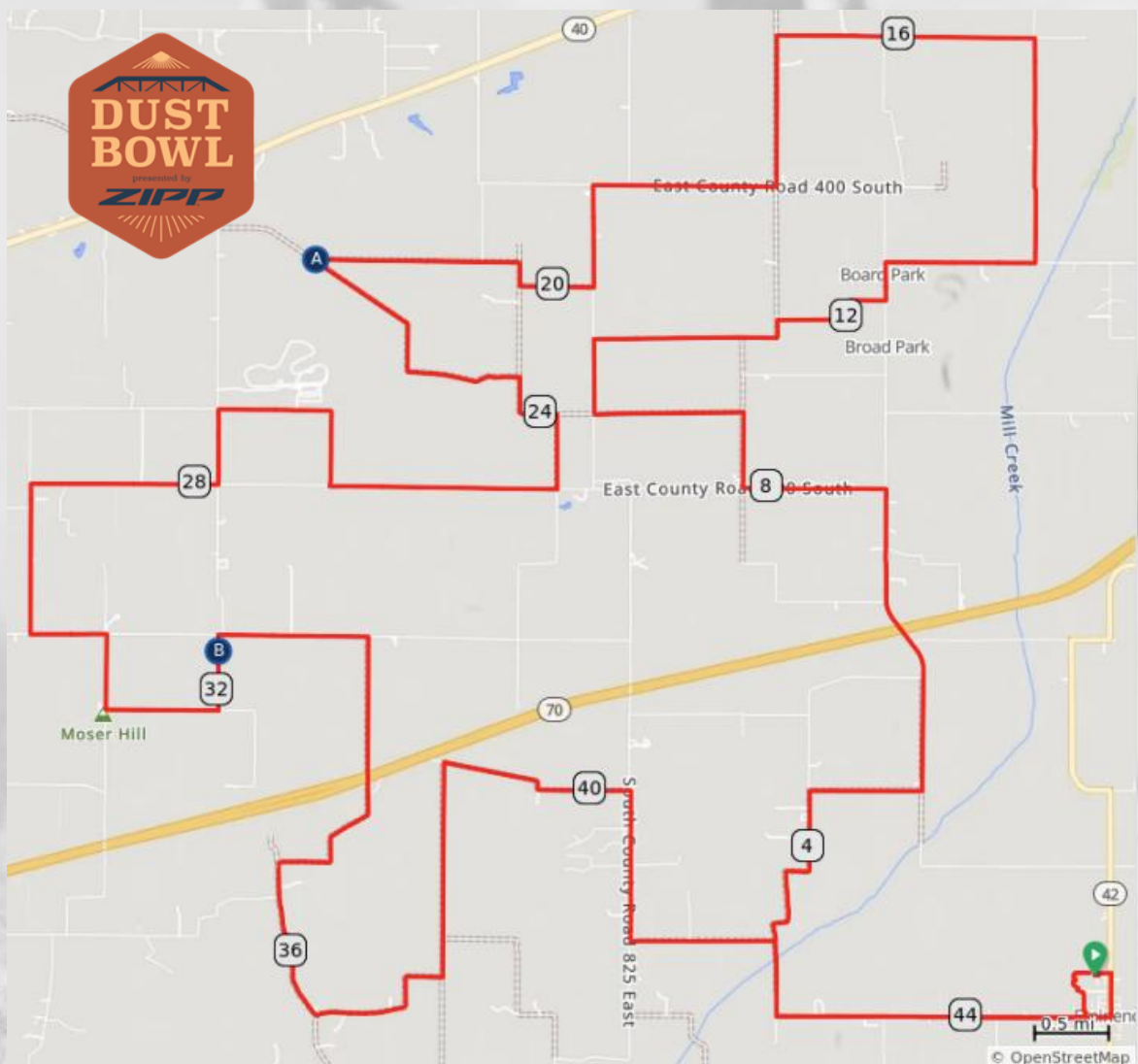
PRESENTED BY HOME BANK

- 30 miles of gravel
- 1,300 feet of elevation gain
- 2 historic bridges crossed
- 2 off-road adventure sections
- 1 SAG Stop (mile 22) plus 1 water only stop (mile 32)



Ride with GPS Route: <https://ridewithgps.com/routes/49205207>

Strava Route: <https://www.strava.com/routes/3373494898023908090>



NEW TIMED SEGMENT = ZIPP 303 XPLR WHEELSET GIVEAWAY!

Zipp will be giving away a set of new Zipp 303 XPLR wheels to the **303rd fastest** rider between the Endeavor Communications SAG Stop and the Zipp Last Chance Saloon!

This 10.4 mile segment includes the Burdge Forest two-track section and ends at the top of the Gravel Pitch climb, where Denim Danger will be heckling riders from the Zipp Last Chance Saloon water stop.



This segment is included on all courses, so every participant has a chance to win these wheels!

We have created a [Strava Segment](#) for this segment, but the official time used for the giveaway will come from our timing company, Racemaker Productions (they will have timing mats just after the Endeavor Communications SAG and just before the Zipp Last Chance Saloon). The winner will be announced during the 5:00pm podium celebration.

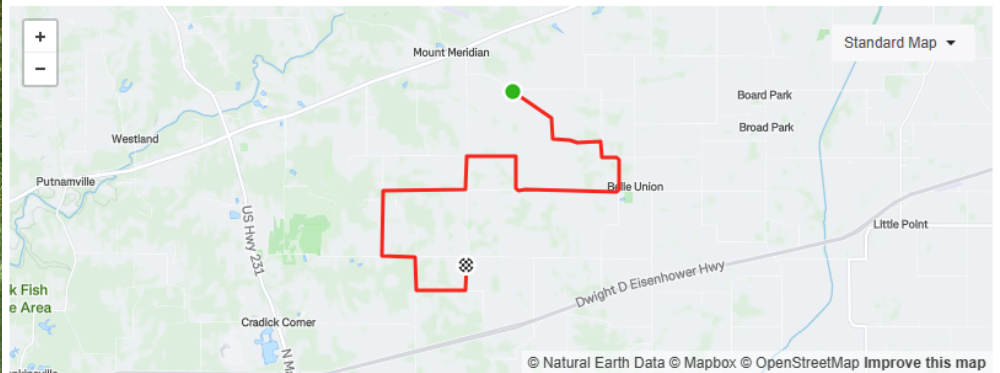


XPLR'n for the ZIPP 303s ☆

Ride Segment Putnam County, Indiana

Distance	Elevation Gain	Avg Grade	Lowest Elev	Highest Elev	Elev Difference
10.40mi	428ft	0.0%	763ft	880ft	117ft

1,862 Attempts By 1,140 People | Starred by 0 People



SAG STOP LOCATIONS

There will be four (4) SAG Stops on the 100 mile course, two (2) on the 100K course, and one (1) on the 44 mile course, plus a water only stop located 10 miles from the finish on all courses. A porta potty will be available at each SAG Stop.

Bethel Church SAG Stop (100K and 100-mile courses only)

****NEW LOCATION IN 2025****

- 100K location: mile 26
- 100-mile location: mile 26
- Opens: 9:00am
- Closes: 11:30am



Big Walnut Nature Preserve SAG Stop (100 mile course only)

- 100 mile location: mile 49
- Opens: 10:00am
- Closes: 1:00pm



Oasis at the Beach SAG Stop (100 mile courses only)

- 100 mile location: mile 62
- Opens: 9:30am
- Closes: 2:30pm

NOTES: this is the location where Drop Bags will be left (see *Drop Bag* section for details).

This SAG stop will be on the banks of Clear Creek and is directly after the McCoy Road metal bridge crossing.



SAG STOP LOCATIONS cont.

Endeavor Communications SAG Stop (all courses)

- 44 mile location: mile 22
- 100K location: mile 40
- 100 mile location: mile 77
- Opens: 9:00am
- Closes: 4:00pm



Zipp Last Chance Saloon Water Stop (all courses)

- 44 mile location: mile 32
- 100K location: mile 50
- 100 mile location: mile 88
- Opens: 9:00am
- Closes: 5:30pm



****Please make sure you and your bike are off the road when stopping at the SAG stops to ensure riders not stopping have a clear road to continue on****

SAG Vehicle Pickup: There will be roving SAG vehicles available to pick up riders unable to fix a mechanical or continue with the race for any reason (though we do expect riders to be self-sufficient and able to fix their own flats or minor mechanicals).

To request a pick up, send a text message with your name and a pin drop of your location to (317) 268-8261. We will send a driver to you as quickly as possible, but due to the expanse of the route and depending on how many riders we have to pick up, it may take a little while for us to get to you. If it is an emergency, please call **911** instead.



SAG STOP DETAILS

Each SAG Stop will be fully stocked with hydration and nutrition needs, including:

- Water (courtesy of [Aqua Systems](#))
- [Tailwind Nutrition Endurance Fuel](#)
- [GU Energy](#) Gels
- [Pickle Juice](#)
- Granola Bars
- Fig Bars
- Pretzels
- Chips
- Trail Mix
- Fruit Snacks
- Fresh Fruit



Other options for nutrition and hydration (as well as restrooms) are the two convenience stores along route:

Groveland BP (100 mile course only)

- 100 mile location: mile 44

Fillmore Quick Stop (100 mile course only)

- 100 mile location: mile 66



HOW TO FUEL WITH TAILWIND

1

DIAL IN YOUR BASE

 = 200 CALS

in 20-24oz of water per hour
* this is the ratio you will find at
aid stations

2

CALCULATE YOUR FUEL

4 HOURS
=
800 CALORIES

3

CHOOSE A CARRYING METHOD

Be sure to continue targeting 20-24oz of
water/hour by carrying plain water, or drinking
water at the aid stations along the way.

4

USE YOUR FUEL

For a bladder or large
bottle, sip continuously as
you run.




tailwind
NUTRITION

ON COURSE
HYDRATION



GET STARTED WITH TAILWIND

Want to try Tailwind?

TRY THE
STARTER KIT



USE CODE:
JOINTHECREW24
FOR 25% OFF



DROP BAG SERVICE

A complementary Drop Bag service is available for those of you riding the **100 mile course**. Your drop bag will be taken to the Oasis at the Beach SAG Stop (approximately mile 62 on the 100 mile course).

- All 100 mile riders will be provided a 1-gallon ziplock bag to be used for your drop bag. As shown in the picture below, this bag can fit two 26 oz. water bottles, plenty of gels and bars, and even some spare clothing.
- You will also be given a number plate to put inside of the bag; the number on the number plate will match your seatpost tag number, allowing you/volunteers to easily find your bag at the SAG stop.
 - **NOTE:** The number plate also includes your meal ticket and shaved ice ticket at the bottom. Make sure to tear both these off before putting the number plate in your drop bag (if you don't, you'll have to wait until the drop bags are returned to get your post-race meal).
- Drop bags will go in the bed of the black Ford F-150 pickup truck that will be staged by the Registration Tent. Place your drop bag in the appropriate bin based on your bib number (e.g. drop bag for bib #40 goes in bin labeled 1-199). **Drop bags must be in truck by 7:55am.**
- At the SAG Stop, the drop bags will be located just past the tables.
- Once you're done with your drop bag, place it in the designated bin marked "return to Eminence."
- **Used drop bags will be returned to the Registration Tent.** We plan to make at least two trips to return the bags: those bags used before 12:00pm will be returned to Eminence around 12:30pm. All other bags will be returned to Eminence around 3:00pm.



OUTSIDE SUPPORT/SPECTATOR GUIDE

As seen in the *SAG Stop* section, there will be MANY SAG stops and PLENTY of nutrition and hydration at each, so by no means is having outside support and/or a personal SAG vehicle necessary.

That said, if you do decide to have a personal SAG vehicle or outside support, **any interaction with them is ONLY allowed at the designated locations listed below**. Riders found taking outside support from somewhere other than these designated locations will be disqualified. Also, please note that **BOTTLE HANDUPS WHILE MOVING ARE NOT ALLOWED** – riders must be completely stopped and off the road to take on supplies.

Additionally, because many of the Dust Bowl 100 roads are narrow and have blind corners, rolling hills, or tall crops, for the safety of the participants we also ask that any spectators that wish to cheer on family or friends only do so at these designated locations.

Note: the mile markers listed below are for the 100K and 100 mile courses; we ask that 44 mile riders only utilize the SAG stop and water stop on course for any/all needs.

100 mile markers in **red**, 100K markers in **blue**

- **North Putnam High School** - 8869 250 E, Roachdale, IN 46172 – **51.7**
- **Town of Fillmore** (the Quick Stop or Christian Church are good options) – **66** / **29**
- **Big Walnut Sports Park** - 1562 S County Rd 250 E, Greencastle, IN 46135 – **71.7** / **33.7**
- **Belle Union Sports Park** (just off course) - 7950 E County Rd 600 S, Greencastle, IN 46135 – **80.7** / **42.6**
- **Eminence Community Schools (Dust Bowl 100 start/finish)** - 6764 IN-42, Eminence, IN 46125

[Click here to view all of the Outside Support/Spectator locations on this Google Map \(click on the location on the map, then click the location name at the bottom to launch directions\)](#)

Recommended spectator/personal SAG driving routes:

- [100 Mile Spectator Route](#)
- [100K Spectator Route](#)



TIMING TAG & RESULTS

Each participant will receive a numbered seatpost tag at check-in; this seatpost tag must be affixed to your bike's seatpost at all times as it contains the timing chip that will be scanned at the finish line to record your official finish time. See the images below for correct (and incorrect) placement of the seatpost tag.



Correct



Correct



Incorrect

Results will be available all day at:

dustbowl100.com/results



NEW LIVE TRACKING FEATURE!

New for 2025, we will be offering [RaceJoy](#) live tracking for all participants! This is done through an app on your phone and will provide live tracking and GPS progress alerts for your friends and family to follow your race in real time (they will have the ability to send you “cheers” and encouragement through the app as well). See more details on the next page.

[Download RaceJoy](#)



RaceJoy Live Phone Tracking How-To

- 1 **Download RaceJoy:** Download the RaceJoy app to your smartphone or tablet from the App Store or GooglePlay.



- 2 **Find Race:** Click Featured Races to access the event you are doing. Races are listed by state.
- 3 **Set Up:** Follow the prompts carefully to get set up properly for race day.

Track Me How-To

1. **Set Up Tracking:** Click PhoneTrak and follow the prompts carefully.
2. **Carry Your Phone:** Participants must carry their claimed device during the race.
3. **Click START MY RACE as you cross the START LINE:** This begins your personal race time.
4. **Replay Race Day in Buzz:** Click Buzz to review your alerts and replay cheers!

Note: You must access RaceJoy on race day to activate GPS tracking. Tracking is turned on 30 minutes prior to the race start. **Warning:** Do NOT use Wi-Fi on race day. This will cause tracking to disengage.

Start My Race
Click When Crossing the Start Line

Track Others How-To

1. **Add participants** to your participants list:
 - Click on the icon on the upper corner of your screen and search for your participant.
2. **Track them in a map view:**
 - Apple Users: click the feet icon at the bottom of the screen.
 - Android Users: click the Track button at the top menu bar.
3. **Track them with GPS-based progress alerts:**
 - You will automatically receive these once you've added people to your participant list.
 - Click Buzz and then Progress Alerts to view alerts received.
 - The number of alerts vary by race and are typically sent out at every mile.
 - Make sure you have your Notifications ON and your volume up to receive alerts.

Relay Team How-To

1. **Verify that you are signed up with your team in RaceJoy:** Make sure you are signed up with your team when you created a profile in RaceJoy. To do this:

- Click the MORE button the race page in RaceJoy.
- Click Profile.

You will see your profile at the top of the screen. If you do not see your team name, click "I Want To Be Tracked" and follow the prompts to sign up with your team. Make sure to select the Relay Course option in order to setup for relay team tracking. All your progress alerts will display the Team Name you used during your setup.

2. **All Push START MY RACE when the first member crosses the start line:** Each team member needs to click their own "Start My Race" button in RaceJoy as the first team member crosses the start line. This will tie the team together for more accurate progress updates that includes information like location, pace and estimated finish time.

Live Tracking Verification



Phone = signed up
for tracking & cheers

Megaphone = can
receive cheers

Tracking Activated

Tracking NOT
Activated

See Battery Preservation Tips

No Guarantee: RaceJoy is bringing together multiple technologies to deliver advanced tracking and interactive experiences during the race. There are many variables that affect RaceJoy's ability to function properly and there is no guarantee RaceJoy will function for a given user. Factors that may affect RaceJoy include older phone models, improper phone set up, weak cell signals in a given region, participant's use of Wi-Fi, unexpected course changes, etc. If you experience any issues, please contact us at support@racejoy.com.

SWAG

- **Swag Bags:** Thanks to our generous sponsors, we will be giving out swag bags to all participants at packet pickup.
- **Event T-Shirt:** All Dust Bowl 100 participants will receive a free softstyle short sleeve t-shirt, compliments of [Gear Up Cyclery](#). Shirts will be handed out at packet pickup.
- **Merchandise:** If you pre-ordered any DB100 merchandise during registration (hats, decals, extra shirts, meal tickets, etc.), you can pick that up at the pre-ordered merchandise table at packet pickup. We will also be selling additional merchandise at the Vendor Expo and on race day.
- **Jerseys:** Limited edition Dust Bowl 100 jerseys and bibs from Eliel will be available for sale in the merchandise tent as well.

AWARDS

- **Overall Winner Award:** The first overall male and female finishers of the **100 mile** course will receive a unique “Dust Bowl” trophy fabricated by [JAG Metal Solutions](#) using repurposed bike chains.
- **Podium Awards:** The top three finishers in each category listed below will receive a special die-cut metal plaque, a limited-edition gold Dust Bowl 100 podium bottle, and product from [UNDRBUDR](#). Podium presentations will take place at 12:00pm, 1:45pm, 3:30pm, and 5:00pm (each category’s podium time is dependent on when the 3rd place rider for that category finishes).
 - **100 Mile:** Overall M/F, Junior M/F, 19-29 M/F, 30-39 M/F, 40-49 M/F, 50-59 M/F, 60-69 M/F, 70+ M/F, Tandem, Singlespeed
 - **100K:** Junior M/F, 19-29 M/F, 30-39 M/F, 40-49 M/F, 50-59 M/F, 60-69 M/F, 70+ M/F, Tandem, Singlespeed
 - **44 Mile:** Junior M/F, 19-29 M/F, 30-39 M/F, 40-49 M/F, 50-59 M/F, 60-69 M/F, 70+ M/F, Tandem, Singlespeed
- **Finisher Awards:** All finishers will receive a commemorative Dust Bowl 100 finisher bottle, plus a cooling towel (courtesy of [Lithko Contracting](#)).



VENDOR EXPO

The Dust Bowl 100 vendor expo will run from 12:00pm through 8:00pm in Eminence on Friday, July 25th. The Expo will be located just south of the main tent (see the *Venue Map* on page 12 for exact location). Confirmed vendors include:

ZIPP **Zipp/SRAM**

SILCA **SILCA**

UNDRBUDR **UNDRBUDR**

SPECIALIZED **Specialized**



USWE

wahoo

Wahoo



Kali Protectives



Tennessee Gravel



School of Rocks



Ghost Hydration



Rocket Revolution

SCUDO PRO

Scudo Pro



Indiana Air National Guard



Friends of Lieber SRA



Official Dust Bowl 100 Merchandise



FREE PARTICIPANT WI-FI!

Thanks to [Roeing IT Solutions](#) and Eminence Community Schools, all participants will have free Wi-Fi access all weekend in Eminence! Here are the details:

- Wi-Fi Network Name: **DB100 Guest**
- Once connected, you will be presented with a landing page where you'll be able to review the terms & conditions and click a button to gain Internet access.

Please note: access may be limited on Saturday due to the number of people on-site. Please limit usage to necessary tasks and avoid using streaming services on your device as that will slow the network for all.



FASCAT COACHING'S 4 TRAINING TIPS FOR THE DUST BOWL 100

[Coach Jake Rytlewski](#) of [FasCat Coaching](#) has ridden the DB100 roads many times, coached numerous DB100 finishers, and is also one of the official photographers for the race. To say he knows the course and what it takes to be successful is an understatement! In this [FasCat Coaching video](#), he discusses [4 training tips](#) that are specific to his knowledge of the Dust Bowl 100 race course:

1. Cornering
2. Group Riding
3. Anaerobic work
4. Tire choice



And join Jake at the FasCat Coaching shakeout ride at noon on Friday for additional tips and course insight!



HEY KIDS! GET THE QUIETEST, MOST
EFFICIENT DRIVETRAIN, WITH

SILCA™

ULTIMATE CHAIN WAXING SYSTEM

98% of people who try
Silca Wax never go back!

- SUPER CLEAN!
- SAVE UP TO 8w!
- NO PEAS CHEMICALS!
- DRIP STAND!
- DESIGNED FOR USE WITH STRIPCHIP!
- 75 - 125°C TEMPERATURE RANGE!
- CABLE COUPLER INCLUDED!
- UP TO 25,000 KM ON A SINGLE CHAIN!

ADD SPEEDCHIP
OR ENDURANCECHIP
TO REALLY KICK
THINGS UP A NOTCH

LET'S PARTY!

Secret Chain Blend, EnduranceChip, and
SpeedChip are made in America

by **SILCA**
...so you know it's the best

USE COUPON CODE: "DUSTBOWL15" TO SAVE 15%

GEAR CHECKLIST

While it comes down to personal preference on what to bring, wear, and carry for a gravel race, below are some items that we would highly recommend packing for your trip to the Dust Bowl 100.

Please note, while we will have roving SAG vehicles available to pick you up if you are unable to fix a mechanical or continue with the race for any reason, we still fully expect riders to be self-sufficient and able to fix their own flats or minor mechanicals.

- ☐ Have your local bike shop tune up your bike a couple weeks before the race
- ☐ Bike
- ☐ GPS Computer or Smartphone with the route loaded (see Course Info section for route links); we will have cue sheets available if you do not have a computer/phone
- ☐ 3 water bottles (3rd bottle can go in a jersey pocket) or a hydration pack
- ☐ Nutrition (snack, energy gels, bars, fruit – personal preference)
- ☐ Bike bag(s) to carry supplies/nutrition (saddle bag, frame bag, top tube bag, and/or handlebar bag)
- ☐ Helmet
- ☐ Sunglasses
- ☐ Jersey
- ☐ Bib shorts
- ☐ Padded cycling gloves
- ☐ Socks
- ☐ Cycling shoes
- ☐ Sunscreen
- ☐ Tire pump
- ☐ Chain lube
- ☐ Multi-tool with chain tool
- ☐ Chain quick link
- ☐ Zip ties
- ☐ Mini pump or CO2 inflator/CO2 cartridges
- ☐ 2 spare inner tubes
- ☐ Tire levers
- ☐ Bacon strips or Dynaplug if running tubeless tires
- ☐ Cash or Credit Card (in case of gas station stops)
- ☐ Front and rear blinking lights (not required, but highly encouraged)



ZIPP'S FOUR TIPS TO MAKE YOU FASTER AT DUST BOWL 100

Zipp is all about making you faster, especially as you tackle Indiana's premier gravel century, the Dust Bowl 100. Below are four Zipp tips for getting the most out of your experience, whether you're riding the century route or the 100K or 44-mile options.

ONE

Tire pressure is a critical component of speed, especially reducing vibration loss (and rider fatigue) on gravel. Dial in your tire pressure with the [Zipp Tire Pressure guide](#)*

TWO

Zipp offers multiple [wheel options](#) for gravel riders.

- The 303 XPLR SW is the fastest on gravel, thanks to its mega-wide rim that integrates seamlessly with approved gravel racing tires.
- The 303 XPLR S borrows key innovations from our premium wide gravel wheelset for a great value.

Setting up your Zipp hookless wheels doesn't have to be complicated. [This video shows you how.](#)

THREE

The [Zipp Service Course SL-70 XPLR](#), designed for ergonomic all-roads efficiency, is the perfect bar for going fast on gravel.

FOUR

With Zipp, you can have confidence you're riding the most advanced wheelsets backed by our [lifetime warranty](#). Learn all about our [Total System Efficiency \(TSE\) approach](#) to making you faster in all conditions.

Zipp is proud to support the Dust Bowl 100, which brilliantly showcases the scenic and challenging gravel riding in our home state of Indiana. In fact, the Zipp factory is only a short drive from the Dust Bowl 100 course. Take a look inside Zipp's Indy operations in this [Making You Faster video](#)!



LOCAL BIKE SHOPS

Gear Up Cyclery

Located in downtown Plainfield, Indiana, Gear Up is just 10 minutes from the Dust Bowl 100 hotels in Plainfield, perfect if you're coming to the race from out of town and need any last minute tune-ups or gear. Gear Up carries Trek, Scott, and Bianchi bikes and offers a full range of bicycle services, accessories, and clothing.

Address: [124 West Main Street, Plainfield, IN, 46168](#)

Hours: 11:00am – 5:00pm (Tu-F), 10:00am – 3:00pm (Sat)

Phone: (317) 203-5045



Bluegrass Bicycle Company

Bluegrass is the official Bike Fitter of the 2025 Dust Bowl 100 and run a shop out of their home in Brownsburg where they specialize in bike fitting services and sell brands such as Cannondale, Orbea, Mosaic, Time, and Look. Bluegrass will accurately fit and adjust the bike to your body and riding style. Once you purchase a lifetime bike fit and/or bicycle, you become a member of the Bluegrass family and also get access to their professional bicycle repair services!

Address: [10929 E. County Road 750 N, Brownsburg, IN, 46112](#)

Hours: By Appointment Only

Email: info@bluegrassbicyclecompany.com



Westfield Cyclesports

While not in immediate proximity to the Dust Bowl venue or hotels, Westfield Cyclesports is available to meet the pre-race needs of anyone traveling through the north side of Indianapolis on their way to the Dust Bowl (e.g. those coming from Northern Indiana, Michigan, etc.). Westfield carries Specialized, Scott, and Trek bikes, along with anything and everything you would need for your ride.

Address: [18128 Market Ct., Westfield, IN 46074](#)

Hours: 9:00am – 6:00pm (Tu-F), 9:00am – 4:00pm (Sat)

Phone: (317) 867-4422



Crossroads Cyclery

Located in Terre Haute, Crossroads Cyclery is a good option for anyone traveling in from the west. Crossroads will also be at the Endeavor Communications SAG Stop on race day providing in-race support.

Address: [1102 Ohio Street, Terre Haute, IN 47807](#)

Hours: 10:00am – 5:00pm (M-W, Sat), 10:00am – 6:00pm (Th-F)

Phone: (812) 242-2453



Top Hat Cyclery

Top Hat Cyclery is a bicycle service and repair shop located in Greencastle. Owner/Mechanic Chris Flegal has more than a decade's worth of shop-related experience under his belt, including serving as the head mechanic at a bike shop in Central Pennsylvania.

Phone: (717) 919-3692

Top Hat Cyclery will be on-site at the Dust Bowl 100 to provide complimentary pre-race support (tire pressure, brake check, fine-tune shifting, etc.)!



RUDY PROJECT DISCOUNT!

As a Dust Bowl 100 participant you get the exclusive offer to create an account with Rudy Project to receive pro-level pricing (35% off retail) on helmets and eyewear, including prescription glasses. Rudy's gravel cycling helmets are designed with improved comfort and ventilation to keep your body temperature down and your performance up, while their gravel specific sunglasses provide a secure fit no matter what bumps and turns you encounter.

To access discounted pricing, simply click the link below, create your account, and begin shopping (discounted prices will be reflected once you create your account and login):

<https://www.rudyprojectna.com/pages/vip-login?team-code=teamcfw>



AQUA SYSTEMS PROMO

Dust Bowl participants can get a \$200 discount on any of Aqua System's "Elite" line of products, including water softeners, reverse osmosis systems, and carbon filtration systems. Just mention "Dust Bowl" to the Aqua Systems team and they will hook you up!

A big thanks to Aqua Systems for covering all our SAG stop water needs for 5 years running!



CAMPING

On-site camping will once again be available Friday and Saturday nights, July 25-26, on the baseball fields at Eminence Community Schools!

Campers will have overnight access to the baseball field restrooms (with running water), and porta potties will also be on-site for use. Shower facilities will be available after the race on Saturday from 11:00am to 6:00pm (additional \$5 fee supporting the Eminence Athletic Department). There is no electrical hookup access.



Camping spots open at 12:00pm on Friday, July 25. Additional check-in details will be provided to campers on race week.

Cost is \$25/night for a 10x10 camping spot (cost is \$40 for both nights). An On-Site Vehicle Camping option is available as well. All proceeds will go back to Eminence Community Schools and the A&A Fire Department.

To reserve your spot, please visit dustbowl100.com/store and select the “On-Site Camping” option (simply select the night(s) you want to camp, add it to your cart, and check out. We’ll tie it to your event registration on the back end).

Almost Home Restaurant will be catering a lasagna dinner for all participants (and friends, family, etc.) on Friday night, making this a perfect option for those of you camping. Cost is \$10/person. Your meal will include an entree (traditional or vegetable lasagna), plus garden or caesar salad, breadsticks, drinks, and dessert. You must pre-pay for your meal by purchasing a meal ticket at dustbowl100.com/store.

See the Venue Map on page 12 for the camping location.

CAMPING RULES:

- No fires. Camp stoves may be used on the sidewalk/parking lot.
- No firearms or weapons on school property.
- No alcohol, tobacco or drug use on school property.
- No glass on the baseball fields.
- Leave no trace — pick up your trash.
- Quiet hours begin at 10 p.m.



LODGING

We are pleased to be partnering with a few great hotels to offer discounted rates for Dust Bowl participants. All hotels are located just 20-25 minutes from Eminence.

Room Blocks at each were only guaranteed through June, but additional rooms may be still be available.

Staybridge Suites/Indy Airport (20 miles east)

- \$142 Queen Suites or \$162 King or 2 Double Suites
- Book via this [link](#) or call 317-839-2700



Embassy Suites Plainfield/Indy Airport (20 miles east)

- Group code **DBG** is good for \$189 Suite rooms
- Book via this [link](#) or call 1-800-EMBASSY



The Inn at DePauw (Greencastle, 20 miles northwest)

- \$30 discount per night
- Book via this [link](#) or call (765) 658-1000



FAVORITE RESTAURANTS

Here are a few of our favorite local dining establishments in the area.

Located **west** of Eminence for those coming from the west or staying at Cloverdale/Greencastle hotels:

- **Almost Home Restaurant & Bar** (DB100 Sponsor!)
 - Delicious hand-crafted menu and award-winning desserts!
 - Open 11:00am – 9:00pm
 - 17 W. Franklin St, Greencastle, IN, 46135
- **Taphouse Burgers**
 - Open 12:00am – 8:30pm (Wed/Thu/Sun; open til 10:00pm Fri/Sat)
 - 24 S. Indiana St., Greencastle, IN, 46135
- **Bridges Craft Pizza & Wine Bar**
 - Open 5:00pm – 9:00pm (Tues thru Sat)
 - 19 North Indiana Street Greencastle, IN 46135
- **Chicago's Pizza**
 - Open 3:00pm – 9:30pm
 - 1004 N. Main St., Cloverdale, IN, 46120



Located **east** of Eminence for those coming from the east and/or staying at the Plainfield hotels:

- **Nigh Brewing Company**
 - Open 11:00am – Midnight
 - 2067 Hadley Rd., Plainfield, IN, 46168
- **Nonna's by So Italian**
 - Open 4:00pm – 9:00pm (closed Sunday)
 - 5020 Cambridge Way, Plainfield, IN, 46168
- **Farm House Brew**
 - Open 8:00am – 2:00pm (closed Sunday)
 - 55 S Chestnut St., Monrovia, IN, 46157
- **Dawg House Pizza**
 - Open 4:00pm – 9:00pm
 - 160 W. Main St., Monrovia, IN, 46157



LOCAL ATTRACTIONS

If you are able spend an extra day or two in the area you won't regret it as there are a number of great local attractions.

The best resources for seeing what is going on are the Convention and Visitors Bureaus for each county:

- Morgan County (Eminence): [Visit Morgan County](#)
- Putnam County (majority of the route): [Go Putnam](#)
- Hendricks County (Plainfield): [Visit Hendricks County](#)

That said, here are a few of our go-to options that won't disappoint:

➤ [Cataract Falls](#)

- Two sets of waterfalls (including the largest waterfall by volume in Indiana), hiking trails, and a covered bridge. Make sure to also check out the historic Cataract General Store just down the road.
- [2605 N. Cataract Rd., Spencer, IN, 47460](#)

➤ Water Parks

- [Splash Island Plainfield](#) – [651 Vestal Road, Plainfield, IN, 46168](#)
- [Lieber State Recreation Aquatic Center](#) – [1317 W. Lieber Road, Cloverdale, IN, 46120](#)

➤ [City of Greencastle](#)

- Small College Town with Shopping, Restaurants, and Entertainment

➤ [DePauw Nature Park](#)

- 520-acre park in and around a retired limestone quarry with well maintained trails. A truly unique hiking experience in Indiana!
- [1400 W County Road 125 S, Greencastle, IN 46135](#)

➤ [Hunter's Honey Farm](#)

- Celebrating 100 years of beekeeping with a store featuring honey, beeswax, bee pollen, candles, soap, lip balm, condiments, etc.
- [6501 W Honey Ln, Martinsville, IN 46151](#)



AIR NATIONAL GUARD STAGE

We're excited to welcome Ryan Young and the Yellow American Spirits to the Indiana Air National Guard stage on Saturday!



RYAN YOUNG

Ryan Young ([@chastainmusic](#)) is a Putnam County native and grew up in Greencastle. Ryan specializes in a variety of rock and country. Ryan will play at 12:30pm Saturday.



YELLOW AMERICAN SPIRITS

Yellow American Spirits ([@yellowamericanspirits](#)) is a self-described “Y’alternative” band from Greencastle. Made up of members Tyler Lamb and Parker Black, YAS dropped their first album “And All These Things” in January. YAS will start their first set at 2:15pm Saturday.



DUST BOWL 100 SPONSORS

A huge thank you from the bottom of our heart to these amazing sponsors and partners! Without them, the Dust Bowl 100 wouldn't be possible. Click on each logo to learn more about the sponsor, and more importantly please direct your business to these sponsors when you're able (and mention the Dust Bowl 100!).





ZIPP

*GO BIG.
GO GRAVEL.*



303 XPLR SW

The fastest wheelset for every gravel racer.



MAKING YOU FASTER



CONTACT:

Website: www.dustbowl100.com

Facebook: www.facebook.com/dustbowl100

Instagram: [@dustbowl100](https://www.instagram.com/dustbowl100)

Email: dustbowl100@gmail.com

Race-Day Contact: (317) 268-8261

Race-Day Emergencies: 911