

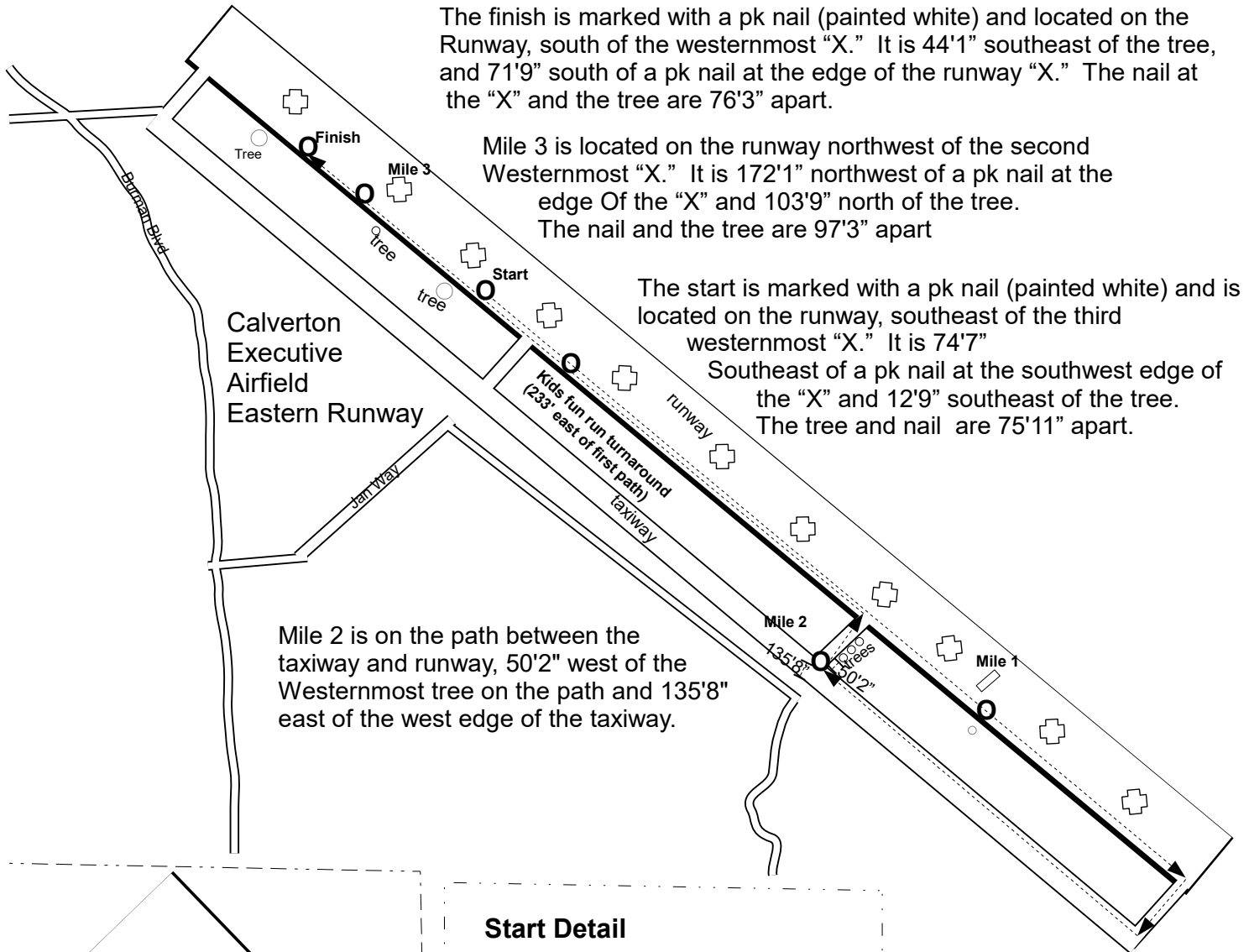
Run for Briggs 5k

Calverton, NY

Measured By: Brendan Barrett 5/4/23

Brendan@SayvilleRunning.com

(631) 589-5700



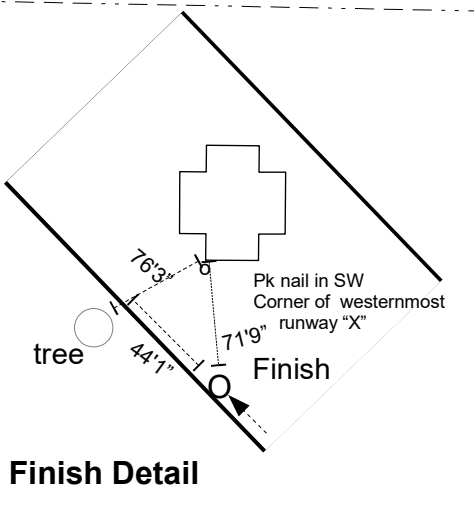
The finish is marked with a pk nail (painted white) and located on the Runway, south of the westernmost "X." It is 44'1" southeast of the tree, and 71'9" south of a pk nail at the edge of the runway "X." The nail at the "X" and the tree are 76'3" apart.

Mile 3 is located on the runway northwest of the second Westernmost "X." It is 172'1" northwest of a pk nail at the edge of the "X" and 103'9" north of the tree. The nail and the tree are 97'3" apart

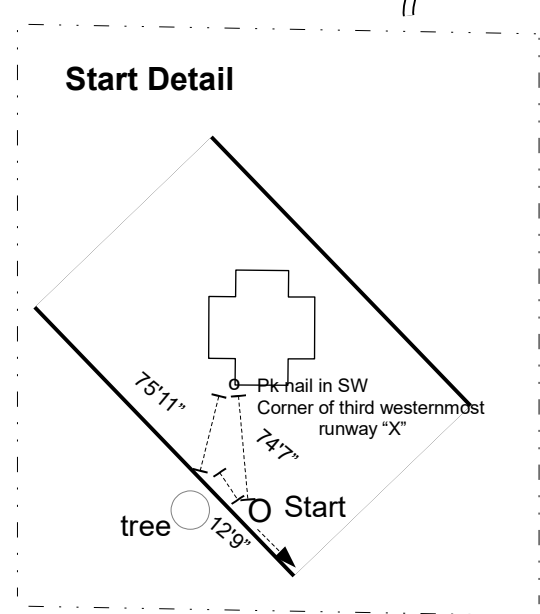
The start is marked with a pk nail (painted white) and is located on the runway, southeast of the third westernmost "X." It is 74'7"

Southeast of a pk nail at the southwest edge of the "X" and 12'9" southeast of the tree. The tree and nail are 75'11" apart.

Mile 2 is on the path between the taxiway and runway, 50'2" west of the Westernmost tree on the path and 135'8" east of the west edge of the taxiway.



Finish Detail



Start Detail

Mile 1 is located on the runway, between the 9th and 10th "X." It is 6'3" northeast of the yellow Electrical post labeled "Runway Side HRL 483 Series", and 48'10" southeast of the yellow metal Rectangle inlaid in the runway

Course has been measured using the shortest possible route and full width of the runway - additional mile split details on page 2

O=painted pk nail (white)

Run for Briggs 5k

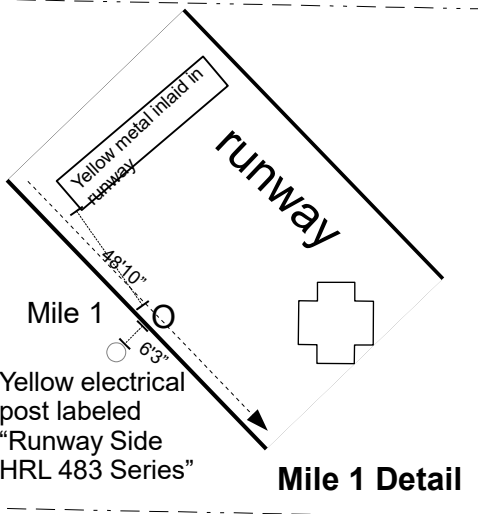
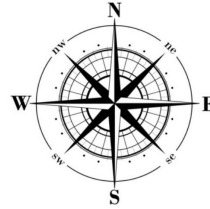
Calverton, NY

Measured By: Brendan Barrett 5/4/23

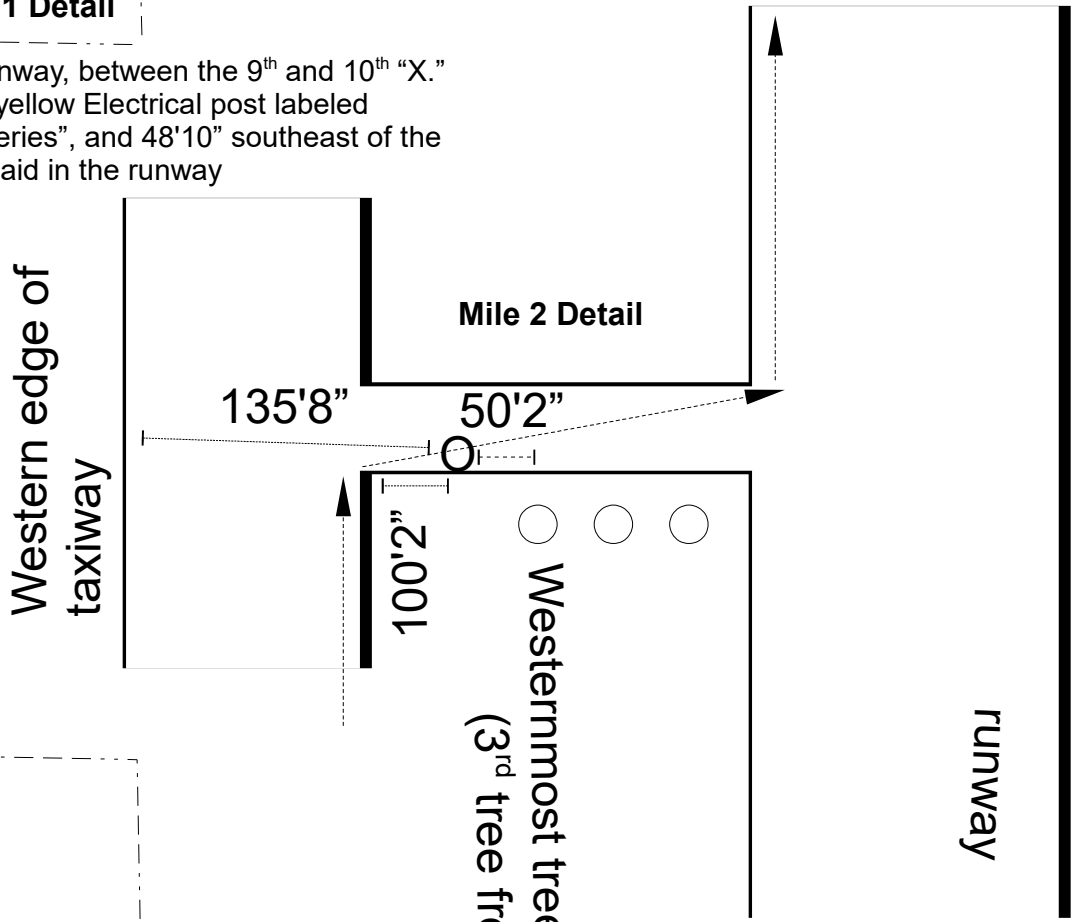
Brendan@SayvilleRunning.com

(631) 589-5700

Course has been measured using the shortest possible route and Full width of the runway

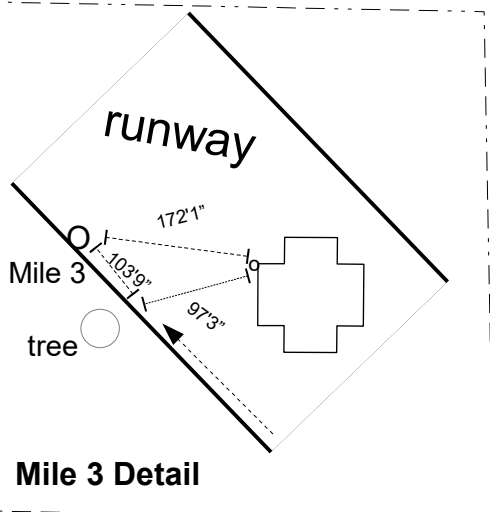


Mile 1 is located on the runway, between the 9th and 10th "X."
It is 6'3" northeast of the yellow Electrical post labeled "Runway Side HRL 483 Series", and 48'10" southeast of the yellow metal Rectangle inlaid in the runway



Westernmost tree
(3rd tree from east)

Mile 2 is on the path between the taxiway and runway, 50'2" west of the Westernmost tree on the path and 135'8" east of the west edge of the taxiway.



Mile 3 is located on the runway, northwest of the second Westernmost "X." It is 172'1" northwest of a pk nail at the edge of the "X" and 103'9" north of the tree.
The nail and the tree are 97'3" apart

O=painted pk nail (white)