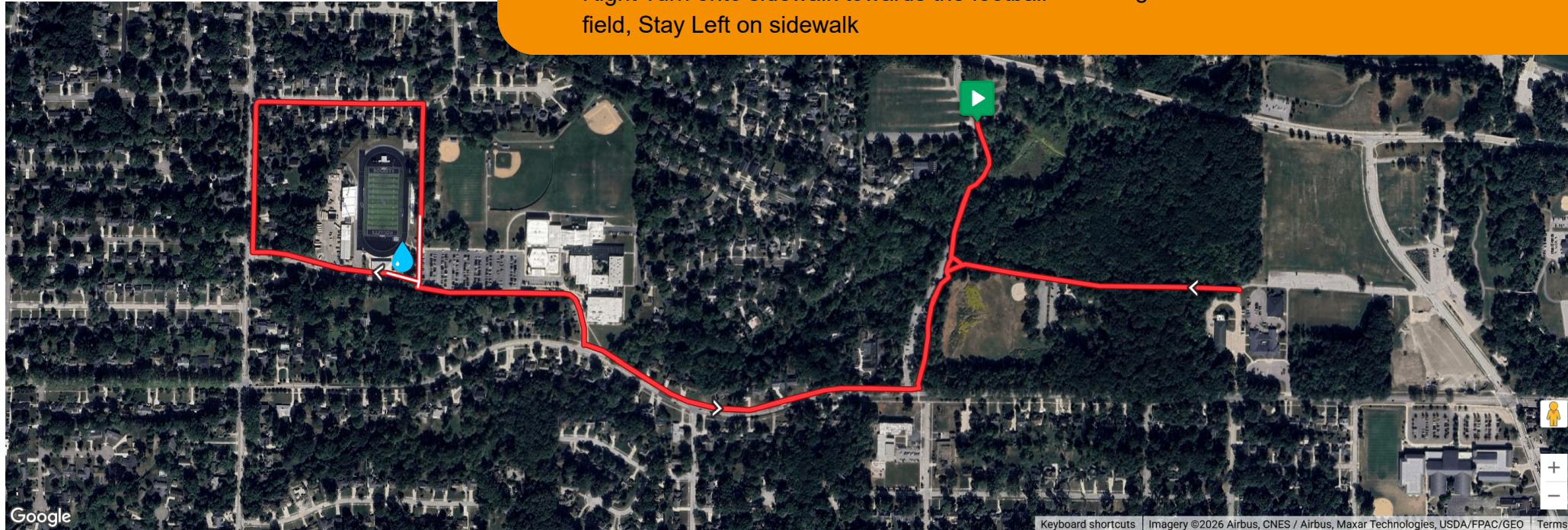
 **Aid Station** is near Bay High School Football Field. It is passed twice at 1.4 Miles and again at 2.1 Miles. It will be stocked with water and Gatorade.



**The run utilizes the multi-purpose trail, sidewalks, and road.
Use caution when crossing and be mindful of the park's patrons.**

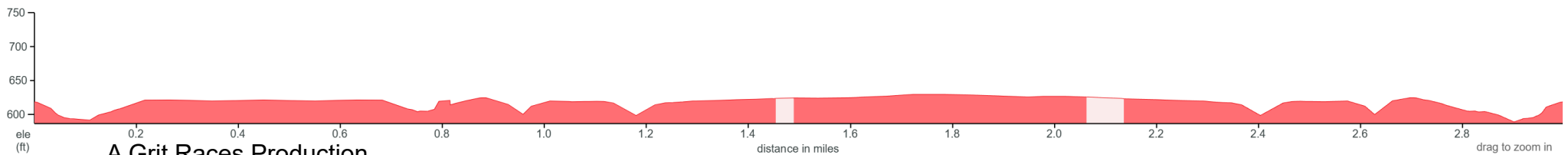
Run course details (3 Miles):

- Left Turn left onto All Purpose Trail, Stay left on the path
- Left Turn left onto Park Lane, Stay left on the road
- U Turn before Fire Station entrance
- Left Turn left on All Purpose Trail along Porter Creek
- Right Turn right onto Wolf Road sidewalk, Stay left on sidewalk
- Right Turn right on to the school driveway
- Right Turn onto sidewalk towards the football field, Stay Left on sidewalk
- Left Turn at water stop
- Right Turn on sidewalk at Bassett Rd.
- Right Turn on sidewalk at Foote Rd
- Right Turn right on sidewalk back to water stop
- Left Turn on school driveway
- Left Turn on sidewalk along Wolf Rd.
- Left Turn left onto All Purpose Trail along Porter Creek
- Straight on trail past Park Lane
- Right Turn to Finish Line



Google
Ele Surfaces Grade Waypoints 3 miles · +113 ft / -109 ft

Keyboard shortcuts Imagery ©2026 Airbus, CNES / Airbus, Maxar Technologies, USDA/FPAC/Geo Terms Drag on graph to zoom/select



A Grit Races Production

drag to zoom in