



# Marathon of the Treasure Coast

## RELAY TEAM OVERVIEW

### RELAY TEAM OVERVIEW

#### Relay Rules

1. All members of your team must attend the safety briefing prior to the race. Race director Brian Huether will conduct the meeting at Memorial Park on Saturday, during packet pick up at Memorial Park at 2:00pm along with the general Marathon & Half Marathon race director clinic.
2. There will be one bib number per team. You will be given a race belt and each team member must wear the bib at their waist during their portion of the relay. The bib has the timing chip attached, so please don't destroy or mutilate the bib while racing.
3. Awards will be given to first, second and third place teams in Male, Female and Coed Relay teams.
4. Bib transitions must happen at the specific relay transfer chutes. If team members transfer at any other location along the course, they will risk disqualification.
5. Teams may assign the relay legs to their members in any order they prefer.
6. Runners must arrive at their assigned exchange point approximately 30 minutes prior to the arrival of the "active" team member.
7. The relay course takes place along active roadways. Always pay attention to local law enforcement and course marshal safety directives. Use crosswalks and obey all pedestrian laws when going to the transition chutes.
8. Team vehicles must be driven in a prudent and cautious manner for the safety of all runners. Any team vehicle driving above posted speed limits or driving in an unsafe manner will result in team disqualification.
9. If possible, one vehicle per team on the course. Your vehicles must be legally parked in a public parking space at each of the transfer sites when dropping off and picking up team members. Display Event parking plaque appropriately on dashboard. No transportation will be provided.
10. Stay Safe, enjoy the race and have fun!!!

The following information details each exchange point and helps assist in making your transitions as smooth as possible.

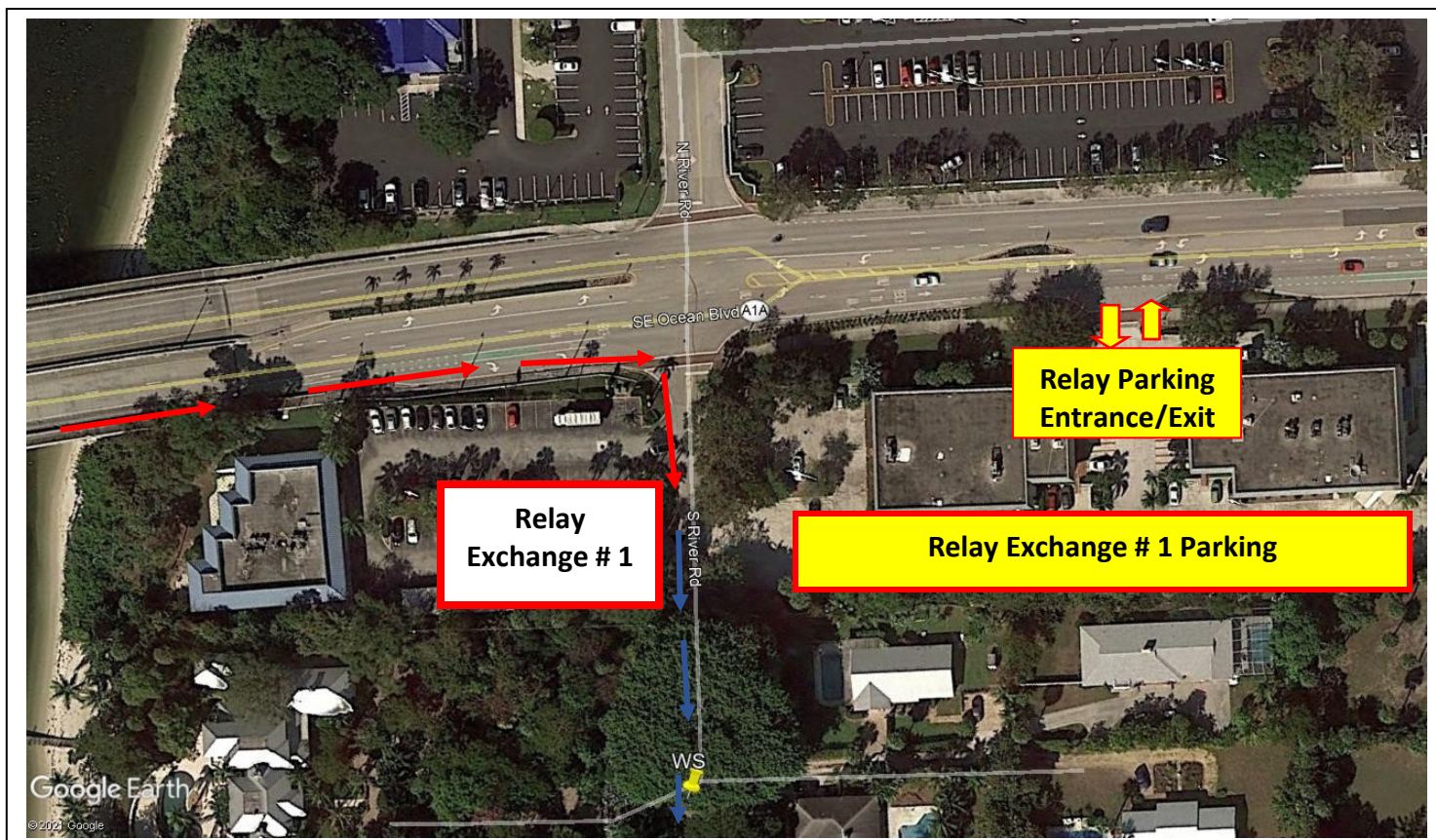
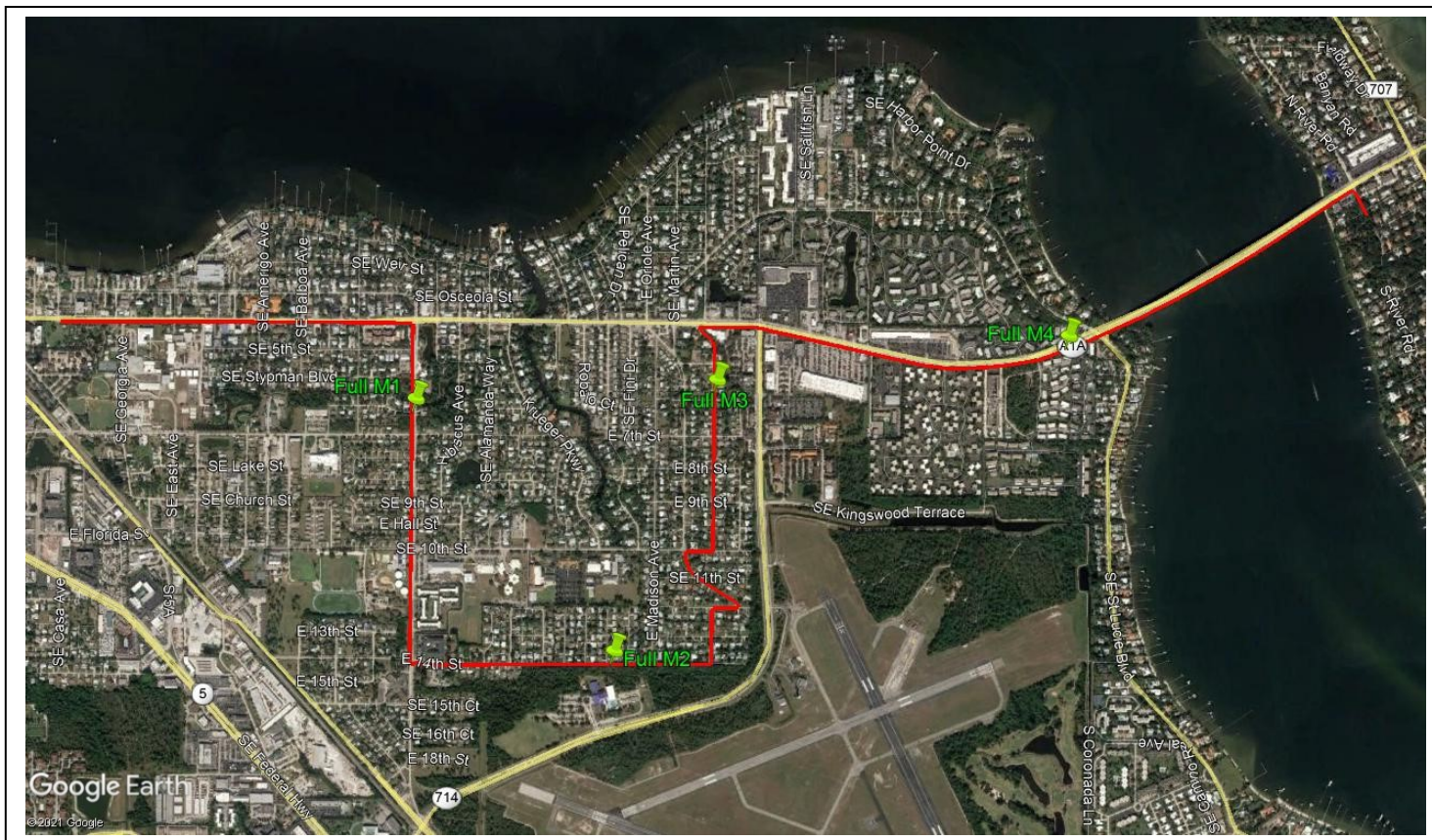


## Relay Leg # 1 – 4.75 Miles

**Leg # 1:** Memorial Park to S. River Road in Sewall's Point, FL

**Parking for Start of Leg # 1:** Memorial Park 300 SE Ocean Blvd Stuart, FL 34994

**Parking for End of Leg # 1/ Start of Leg # 2 :** 3601 SE Ocean Blvd, Stuart, FL 34996  
(Corner of S. River Road and SE Ocean Blvd.)

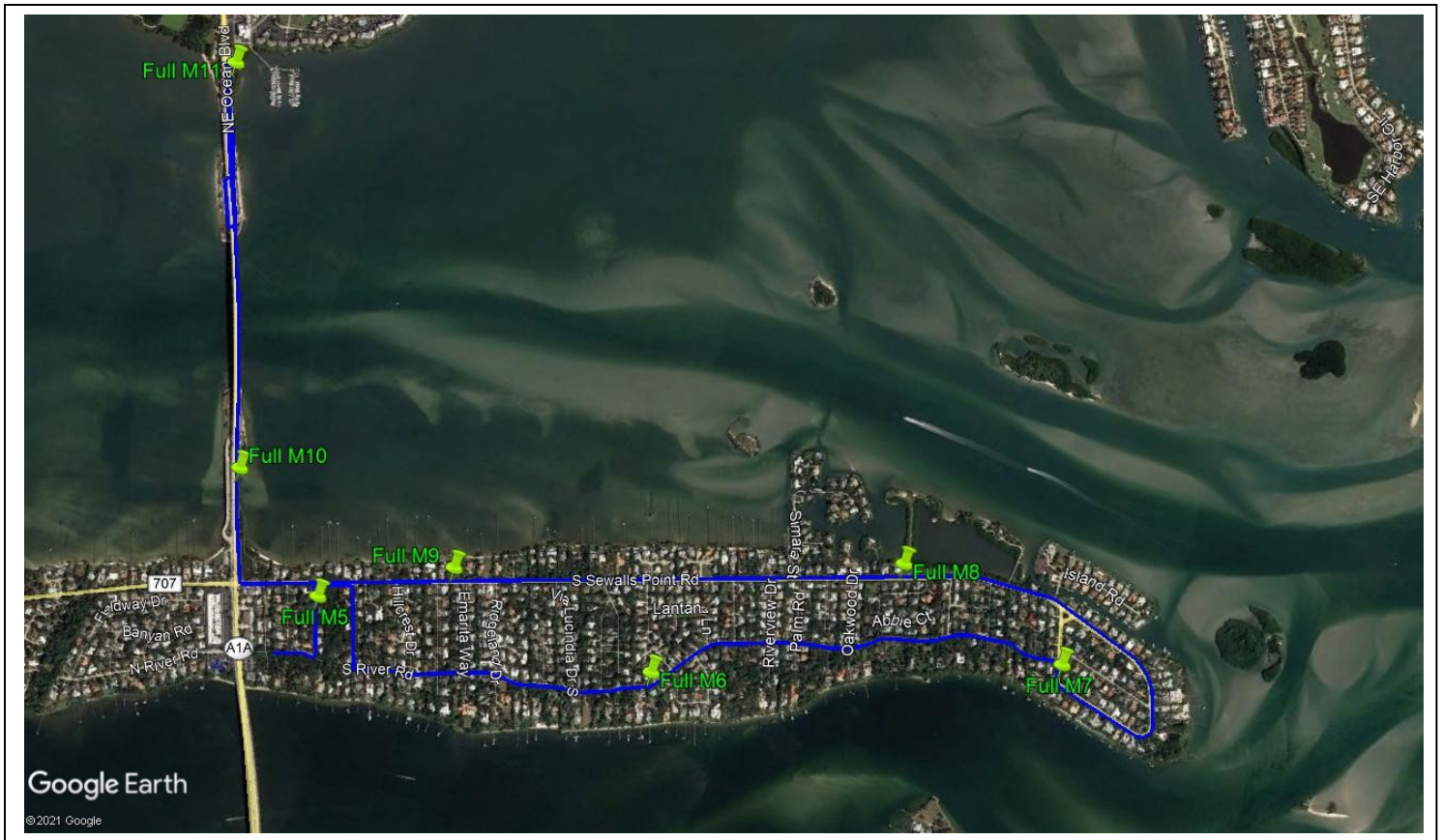




## Relay Leg # 2 – 6.45 Miles

**Leg # 2:** 3601 SE Ocean Blvd, Stuart, FL 34996 to Stuart Causeway East Island (underneath the Ernest Lyons Bridge)

**Parking for End of Leg # 2 / Start of Leg # 3:** Stuart Causeway East Island (underneath the Ernest Lyons Bridge)

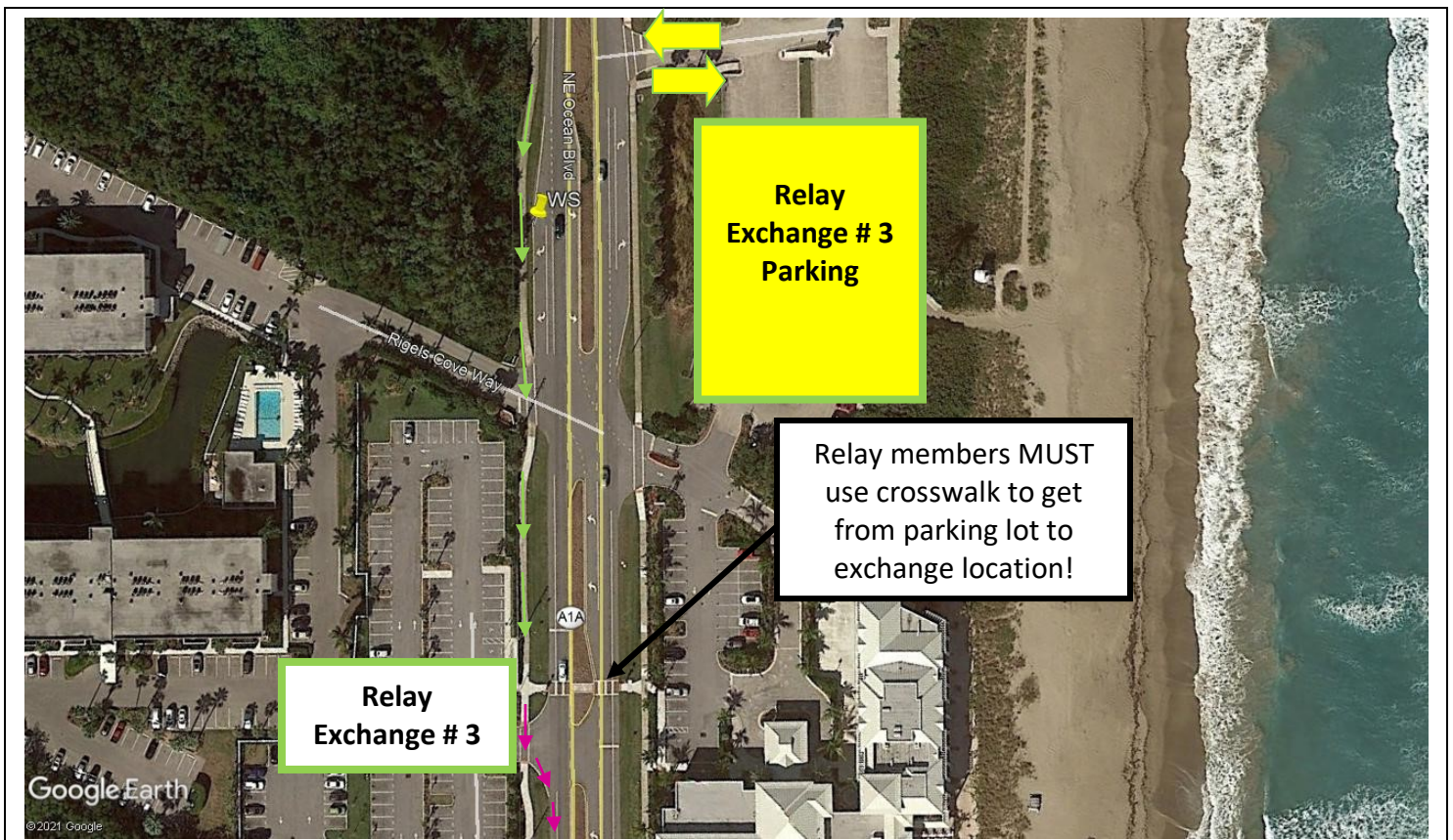
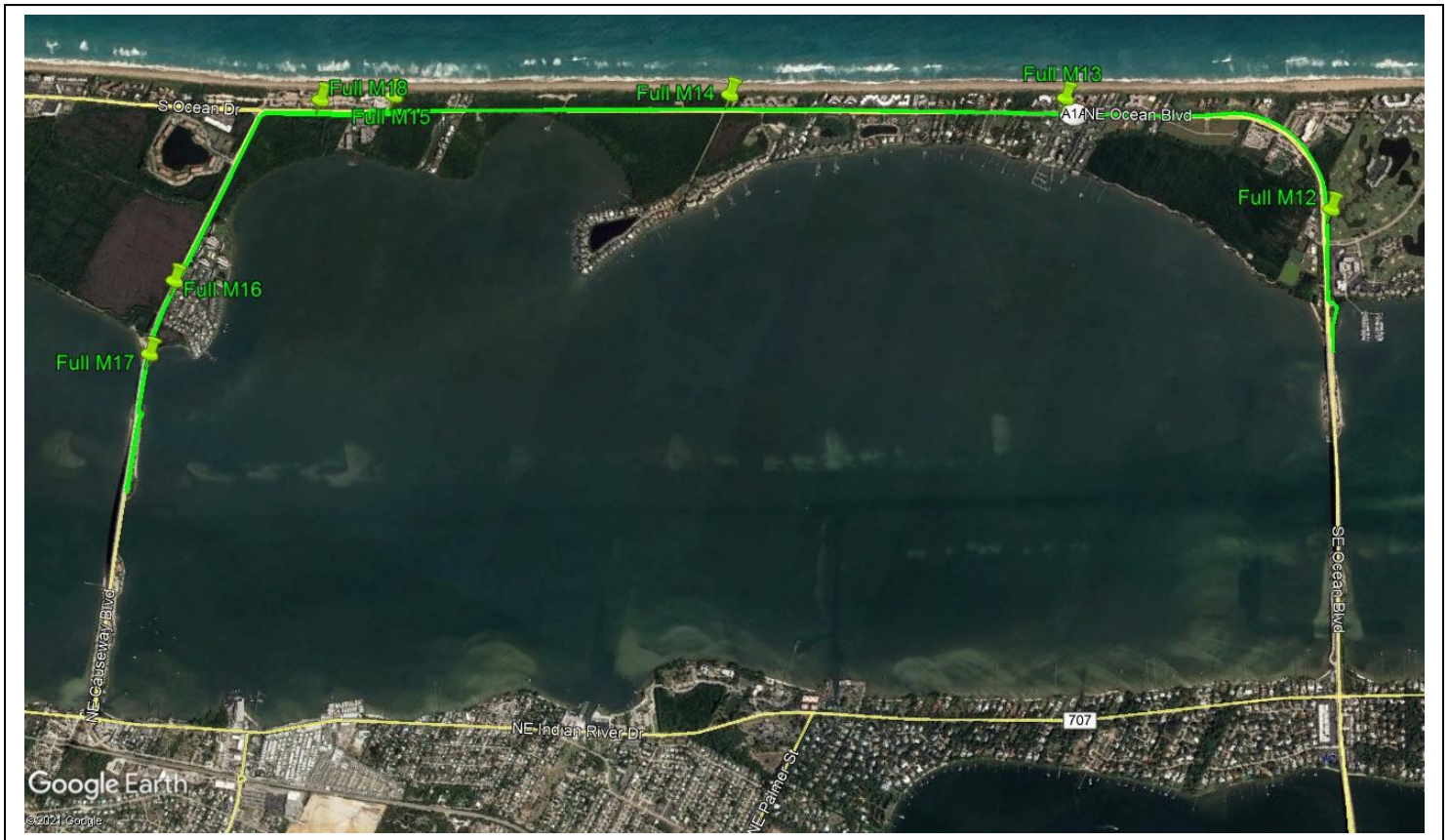




## Relay Leg # 3 – 7 Miles

**Leg # 3 :** Stuart Causeway East Island (under bridge) to 19061 NE Ocean Blvd. Jensen Beach, FL

**Parking for End of Leg # 3 / Start of Leg # 4** Jensen Beach Public Parking Lot





## Relay Leg # 4 – 8 Miles

**Leg # 4:** 19061 NE Ocean Blvd. Jensen Beach, FL to Memorial Park, Stuart, FL

**Parking at Finish Line:** Stuart Middle School located at 575 SE Georgia Ave, Stuart, FL 34994

